


# LGMG

## AR45J-H

### ARTICULATING BOOM LIFT

- 
- The 992/661lbs (450/300kg) dual-capacity design greatly improves efficiency on the worksite.
  - Proportional smooth driving, precise positioning and comfortable operation.
  - Self-leveling platform together with hydraulic platform rotation deliver exceptional productivity.
  - Swing out engine tray for easy access and maintenance.
  - Intelligent self-diagnostic system for quick troubleshooting.



# LGMG Diesel - Articulating Boom Lift

## SPECIFICATIONS

MODELS	AR45J-H ( AR14J-H )	
Measurements	Imperial	Metric
Work Height Max.	52'2"	15.9m
Platform Height Max.	45'7"	13.9m
Horizontal Outreach	25'3"	7.7m
Up and Over Height	24'3"	7.4m
Platform Length	6'	1.83m
Platform Width	2'6"	0.76m
<b>A</b> Stowed Length	22'10"	6.95m
Length-Transport (jib tucked)	19'4"	5.9m
<b>B</b> Overall Width	7'7"	2.3m
<b>C</b> Stowed Height	7'4"	2.24m
Height-Transport	8'8"	2.65m
<b>D</b> Wheelbase	7'5"	2.25m
<b>E</b> Ground Clearance	1'2"	0.35m

### PRODUCTIVITY

Max. Platform Occupancy	2 (unrestricted) / 3 (restricted)	
Platform Capacity (unrestricted)	661 lbs	300kg
Platform Capacity (restricted)	992 lbs	450kg
Turntable Rotation	355°	355°
Drive Speed-Stowed	3.1mph	5km/h
Drive Speed-Raised	0.5mph	0.8km/h
Gradeability	45%	45%
Max. Wind Speed	28mph	12.5m/s
Turning Radius-Inside	5'6"	1.67m
Turning Radius-Outside	12'	3.66m
Max.Slope	5°/5°	5°/5°
Tire Type	RT Foam-filled	
Tire Models	315/55D20	315/55D20
Ground Pressure, Tyres	75.4 psi	520 kPa

### POWER

Power Source	Kubota 36kW/48.3hp Kubota 18.5kW/24.8hp	
Fuel Tank Capacity	17.2gal	65L

### HYDRAULIC SYSTEM

Hydraulic Oil Volume	19.8gal	75L
----------------------	---------	-----

### WEIGHT

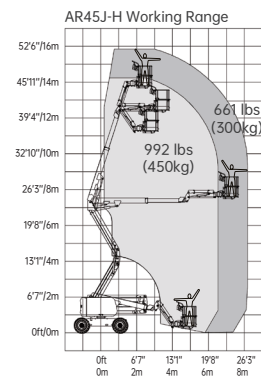
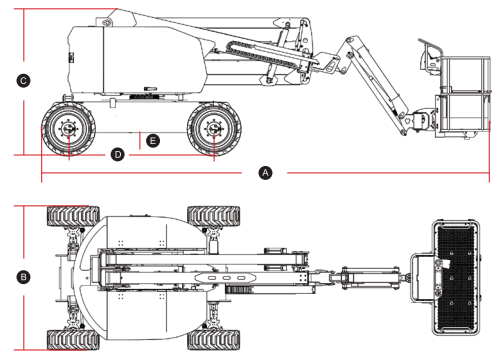
Machine Weight	16,314 lbs	7,400kg
----------------	------------	---------

### STANDARD FEATURES

Proportional control	Emergency stop device
Horn/Hour meter	Auto-leveling platform
Full-height drive	Anti-collision protection
Flashing beacons	Over tilt protection system
Cylinder bellows	Platform control cover
Oscillating axle	Overload sensing system
Platform tool box	Intelligent diagnostic system
Telematics connector	RT Foam-filled tires

### OPTIONAL

Telematics	Solid tires
AC power to platform	Solid non-marking tires
Hydraulic generator kit	Foam-filled non-marking tires
Cold weather package	Half-height mesh platform
3.5kw Hydraulic generator	Biodegradable hydraulic oil
Auxiliary rail	



Please contact LGMG or a local dealer for more details.

LGMG reserves the right to change technical data without prior notice. All photos and pictures in this brochure are for promotional purposes only.

## LGMG North America Inc.

Address: 4105 Live Oak Drive, Suite 100, The Colony, Texas 75056 United States  
Email: [sales@lmgna.com](mailto:sales@lmgna.com) Tel: +1 833 288 5464

[www.lmgna.com](http://www.lmgna.com)



RELIABILITY IN ACTION