

RELIABILITY IN ACTION



LGMG CHINA FACTORY (HQ) 🏠

LINGONG HEAVY MACHINERY CO., LTD.
Address: No. 2676, Kejia Road, Jinan, Shandong, China
Email: sales@lgmg.com.cn
Tel: +86 531 6787 9283

LGMG MEXICO FACTORY 🏠

LGMG DE MEXICO S.A. DE C.V.
Address: calle principal 113, parque industrial Roots, Marín, Nuevo León
Email: admin@lgmg.mx
Tel: +52 81 8287 6207

LGMG CANADA 🏠

LGMG Machinery Canada Ltd.
Address: 76 Sinclair Blvd, Brantford, Canada
Email: sales@lgmg.ca
Tel: +1 (800) 420-5999

LGMG HQ



LGMG CANADA



Information of agent

Please contact LGMG Canada for more details.
LGMG reserves the right to change technical data without prior notice.
All photos and pictures in this brochure are for promotional purpose only.
This brochure comes into effect in November, 2025.
This brochure is only available in Canada.

LGMG

MOBILE ELEVATING WORK PLATFORMS



Canada Market

CONTENTS

P01-02

Our Profile

P04

Global Sales Network

P06

R&D and Innovation

P08

Product Range

P15-22

Articulating Boom Lifts

P31-38

Scissor Lifts

P43-50

Telehandlers

P03

Contents

P05

Production Line

P07

Top Service

P09-14

Telescopic Boom Lifts

P23-30

RT Scissor Lifts

P39-42

Vertical Mast Lifts

GLOBAL SALES NETWORK



100+ COUNTRIES **3** FACTORIES
1000+ PARTNERS **10+** SUBSIDIARIES

- LOCAL TEAM SUPPORT
- LOCAL MACHINE DELIVERY
- LOCAL SPARE PARTS
- LOCAL FAST AND HIGH-QUALITY SERVICE
- LOCAL TRAINING

LGMG products have obtained multiple international certifications, including CE, ANSI, Australian AS, CSA, KC, JIS, EAC and other major international standards. LGMG's products have been successfully sold to over 100 countries worldwide and have established long-term partnerships with more than 1000 partners, covering key markets such as the United States, Canada, the UK, Germany, the Netherlands, Italy, Spain, South Korea, and Japan.



OUR PROFILE

Founded in 1972, Lingong Group is recognized as one of the top 100 enterprises in China's construction machinery industry and one of the five leading groups in this sector. Lingong Group consists of three core companies: Shandong Lingong Construction Machinery Co., Ltd. (SDLG), Lingong Heavy Machinery Co., Ltd. (LGMG), and Lingong Special Machinery Co., Ltd. The group's business portfolio spans five major areas: construction machinery, mining machinery, aerial work platforms, special machinery, and parts manufacturing.

Located in Jinan, Shandong Province, China, Lingong Heavy Machinery Co., Ltd. (LGMG) is a subsidiary of Lingong Group, with business sections covering aerial work platforms, telehandlers, and mining machinery, etc. LGMG has emerged as a significant player in China's construction machinery industry, ranking among the top 100 global construction machinery manufacturers, the top 30 in China, and the top 5 among Chinese manufacturers of aerial work platforms.

LGMG has established 100% owned subsidiaries in Europe, North America, Australia, Brazil, the UK, Canada, Dubai, Indonesia, Japan, and South Korea to provide better sales, service, and parts support for aerial work platforms and telehandlers to our customers.

In 2023, the construction of the LGMG global manufacturing base in Mexico was completed, and its official operation marks a significant milestone for LGMG in terms of overseas production.

With China and Mexico as its hubs and over 13 overseas subsidiaries as its cornerstones, LGMG is shaping a "Global Ecosystem Economy" model to achieve the localization of sales, R&D, manufacturing, and services overseas, thereby accelerating the pace of LGMG's global development.

PRODUCTION LINE

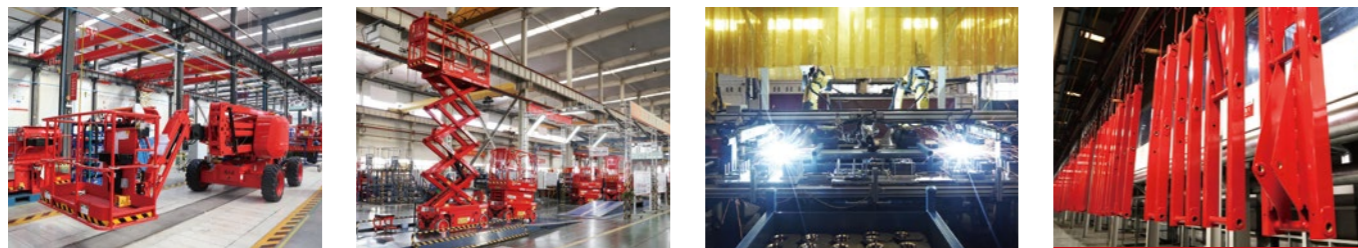


World-Leading Manufacturing Lines

The LGMG manufacturing base in China currently operates seven aerial work platform assembly lines, namely: three scissor lift production lines, one mast lift production line, one telescopic boom lift production line, one articulating boom lift production line, and one telehandler production line, with an annual capacity exceeding 60,000 units.

The LGMG Mexico production plant marks the company's first step into overseas manufacturing, with an annual capacity of 33,000 units. It has fully localized R&D, manufacturing, sales, service, and the supply chain for aerial work products, driving new momentum for global development.

Strictly adhering to the six core principles of its Lean Production System (LPS), LGMG exercises tight control over every process from component welding and painting to machine assembly and final product inspection to maximize production efficiency and ensure high product quality.

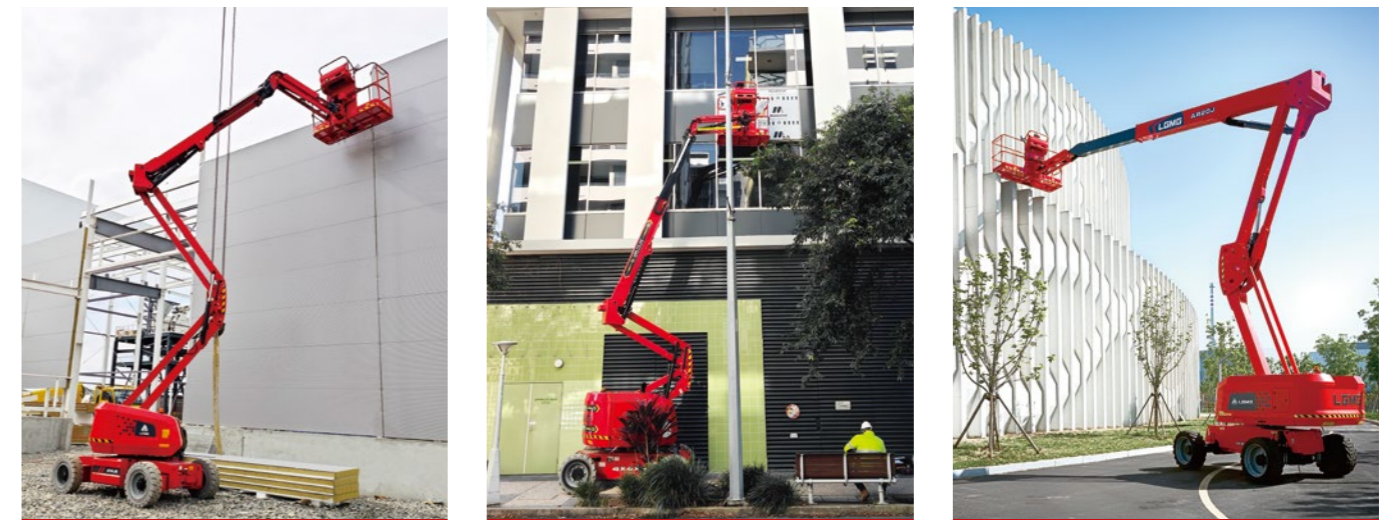


R&D AND INNOVATION

R&D and Innovation as the Core of Global Strategy

LGMG believes that R&D and innovation are key to sustainable business growth. The company has invested heavily in R&D and established a provincial-level innovation center responsible for new product development and component reliability testing. This initiative accelerates technological innovation and consistently enhances product quality. In addition, LGMG has collaborated with one of China's top universities to establish the LGMG Research Institute. The institute aims to address industry challenges, develop cutting-edge technologies, and nurture future technical talent for the aerial work platform industry.

Nowadays, electrification, digitalization, and intelligence have become focal points for industry development. LGMG has successively established R&D centers in countries such as Japan and Mexico to enable efficient collaboration between domestic and international teams, driving LGMG's technological advancements and product innovation in global markets.



TOP SERVICE

LGMG provides support and services before, during, and after sales. We integrate precise services into every aspect closely related to each customer and offer technical support, training programs, warranties, and spare parts sales throughout the entire lifecycle of the machine.



TECHNICAL SUPPORT

- Real-time remote technical support and on-site assistance for fault diagnosis and problem solving.
- Access and download technical documents from the official website, enhancing the convenience of obtaining information.
- Online E-learning system for mastering correct equipment operation and maintenance skills.



TRAINING SUPPORT

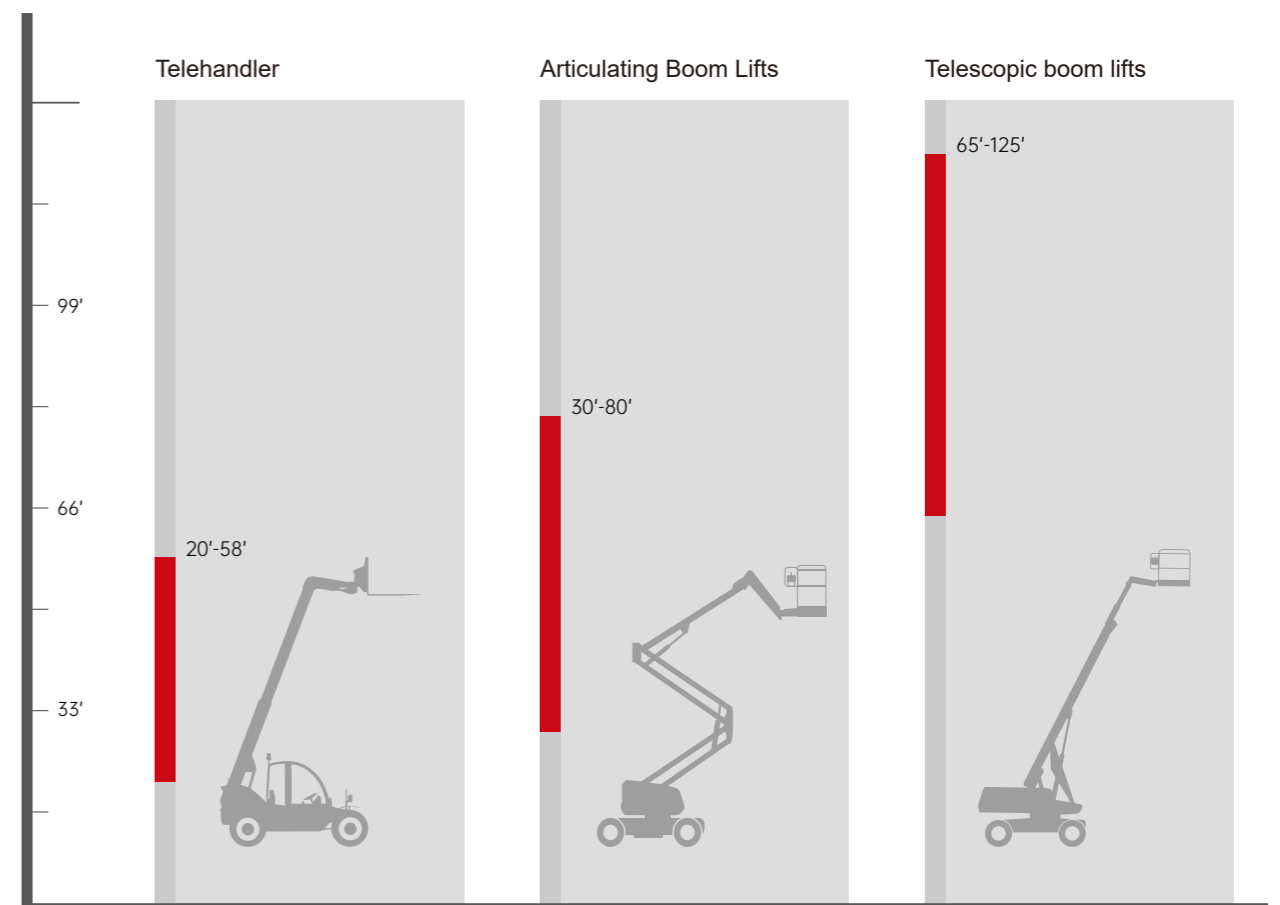
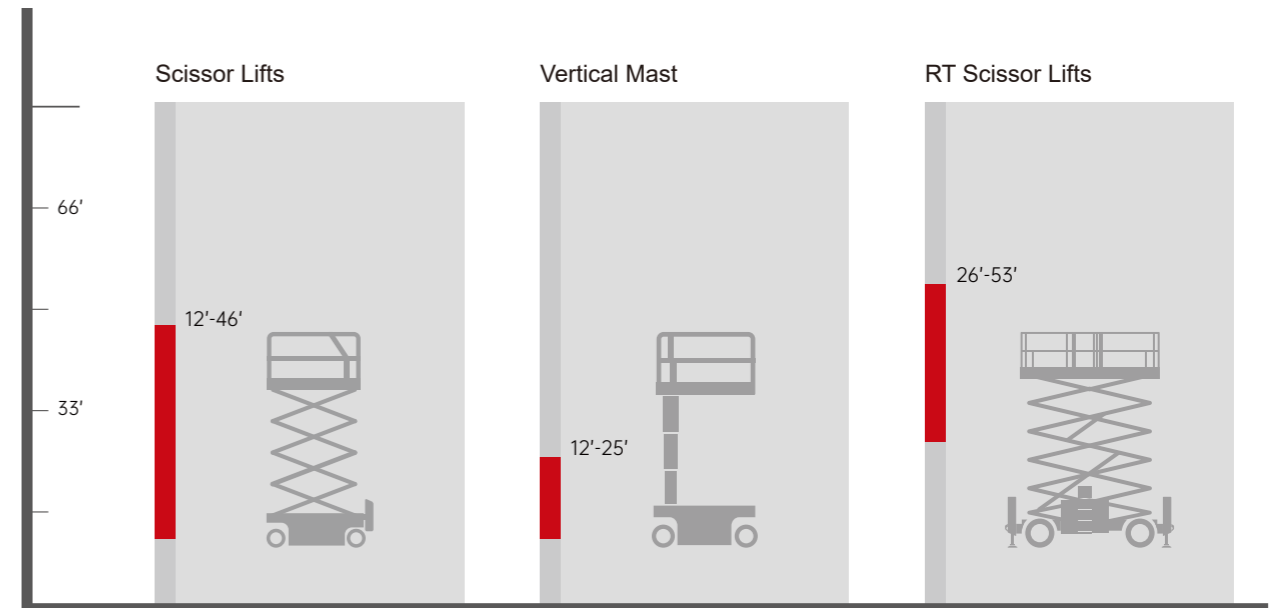
- Regular online and on-site training sessions with hands-on instruction.
- Customized E-learning platform for self-paced learning anytime, anywhere.
- Professional trainers located worldwide, covering key international markets and regions.



PARTS SUPPORT

- LGMG operates 10 overseas subsidiaries and multiple service centers globally, offering reliable spare parts support.
- Provides precise spare parts manuals and a 24/7 online technical support team to address customer inquiries.
- Offers customers a complete range of spare parts information, available for access and download on the official website.
- Establishes a global spare parts WebShop for convenient online ordering.

PRODUCT RANGE



High Capacity
High Productivity

LGMG has a complete line of engine-driven, high-capacity telescopic boom aerial work platforms, with the maximum working height ranging from 21.8 to 29.8 meters (71'6"/97'9"). With a double capacity design of 450/300kg (992/661 lbs), the machine can allow up to 3 people to work at the same time, which greatly improves work efficiency.

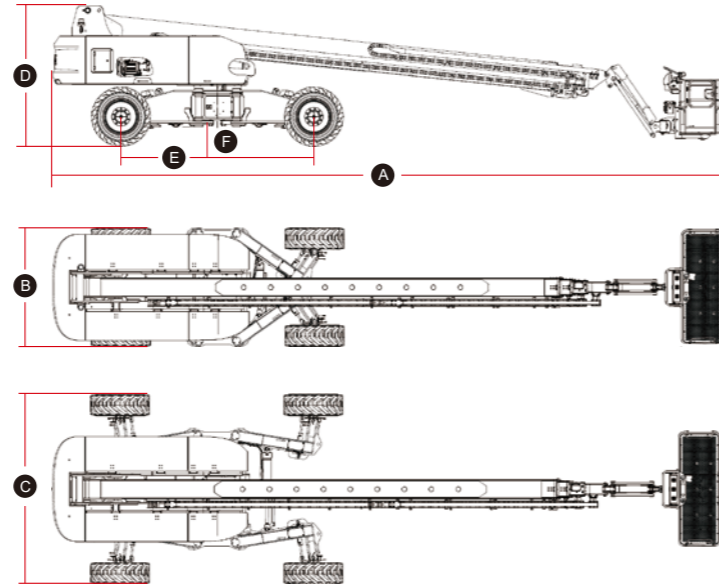
SPECIFICATIONS

MODELS	T65J-H		T85J-H		T125J-H	
Measurements	Metric	Imperial	Metric	Imperial	Metric	Imperial
Work Height Max.	21.8m	71'6"	27.9m	91'6"	40.2m	131'11"
Platform Height	19.8m	65'	25.9m	85'	38.2m	125'4"
Horizontal Outreach Max.	16.6m	54'6"	21.6m	70'10"	23.5m	77'1"
Platform Length	2.44m	8'	2.44m	8'	2.44m	8'
Platform Width	0.9m	2'11"	0.9m	2'11"	0.9m	2'11"
Ⓐ Length-Stowed	10.2m	33'6"	12.72m	41'9"	14.31m	46'11"
Length-Transport (jib tucked)	8.3m	27'3"	11m	36'1"	12.42m	40'9"
Ⓑ Overall Width	2.49m	8'2"	2.5m	8'2"	2.49m (outriggers stowed)	8'2" (outriggers stowed)
Ⓒ Overall Width	/		/		4.01m (outriggers unfolded)	13'2" (outriggers unfolded)
Ⓓ Height-Stowed	2.78m	9'1"	2.83m	9'3"	2.89m	9'6"
Height-Transport	2.89m	9'6"	2.99m	9'10"	2.92m	9'7"
Ⓔ Wheelbase	2.51m	8'3"	2.85m	9'4"	4.12m	13'6"
Ⓕ Ground Clearance	0.4m	1'4"	0.43m	1'5"	0.34m	1'1"
PRODUCTIVITY						
Platform Capacity (unrestricted)	300kg	661 lbs	300kg	661 lbs	300kg	661 lbs
Platform Capacity (restricted)	450kg	992 lbs	450kg	992 lbs	450kg	992 lbs
Max. Platform Occupancy	2 (unrestricted) / 3 (restricted)					
Turntable Rotation	360°Continuous		360°Continuous		360°Continuous	
Drive Speed-Stowed	4.8km/h	3mph	4.8km/h	3mph	5km/h	3.1mph
Drive Speed-Raised	0.8km/h	0.5mph	0.8km/h	0.5mph	0.6km/h	0.37mph
Gradeability	45%		45%		45%	
Max. Wind Speed	12.5m/s	28mph	12.5m/s	28mph	12.5m/s	28mph
Turning Radius-Inside	2.5m	8'2"	3.66m	12'	6.6m (outriggers stowed)	21'8" (outriggers stowed)
Turning Radius-Outside	5.5m	18'	6.55m	21'6"	10.1m (outriggers stowed)	29'10" (outriggers stowed)
Turning Radius-Inside	/		/		2.9m (outriggers unfolded)	9'6" (outriggers unfolded)
Turning Radius-Outside	/		/		6.7m (outriggers unfolded)	22' (outriggers unfolded)
Max. Slope	5°/5°		5°/5°		5°/5°	
Tire Type	Foam-filled		Foam-filled		Foam-filled	
Tire Models	355/55D625		18-625		445/50D 710	
Ground Pressure, Tyres	670 kPa	97.2 psi	898 kPa	130.2 psi	/	
POWER						
Power	Kubota 36kW/48.3hp Deutz 36.4kW/48.8hp		Kubota 54.6kW/73.2hp Deutz 55.4kW/74.3hp		Kubota 54.6kW/73.2hp	
Fuel Tank Capacity	100L	26.4gal	100L	26.4gal	150 L	39.6 gal
HYDRAULIC SYSTEM						
Hydraulic Oil Volume	180L	47.5gal	180L	47.5gal	220 L	58.1 gal
WEIGHT						
Machine Weight	12,000kg	26,455 lbs	18,300kg	40,345 lbs	20,700 kg	45,635 lbs

STANDARD FEATURES

- Proportional control
- Horn/Hour meter
- Emergency stop button
- Auto-leveling platform
- Anti-collision protection
- Over-tilt protection system
- Platform control cover
- Overload sensing system
- Intelligent diagnostic system
- Descent alarm with flashing beacon
- Flashing beacons
- Cylinder bellows
- Platform tool box
- Oscillating axle
- Telematics connector
- AC power to platform

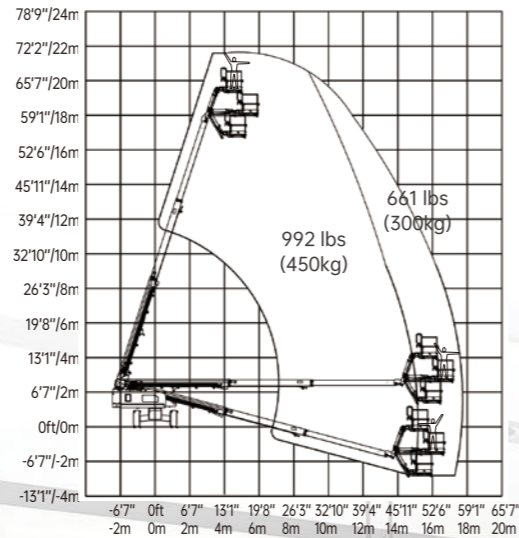
MACHINE SIZE



OPTIONAL

- Telematics
- Foam-filled non-marking tires
- Solid non-marking tires (T65J-H)
- Solid tires (T65J-H)
- Half-height mesh platform
- Hydraulic generator kit
- 3.5kw Hydraulic generator
- 7.5kw Hydraulic generator (T65J-H)
- 12kw Hydraulic generator (T85J-H)
- Hydraulic oil radiator
- Cold weather package
- Glazier kit
- Auxiliary rail
- Biodegradable hydraulic oil

T65J-H WORKING RANGE



SPECIFICATIONS

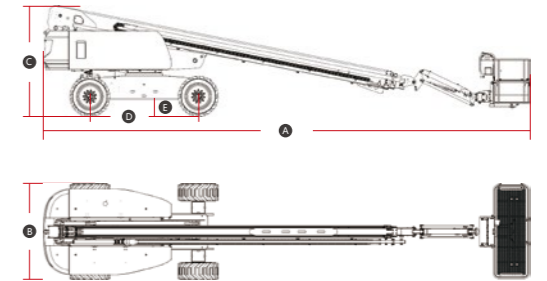
MODELS	T92J	
Measurements	Metric	Imperial
Work Height Max.	29.8m	97'9"
Platform Height Max.	27.8m	91'2"
Horizontal Outreach	22.7m	74'6"
Platform Length	2.44m	8'
Platform Width	0.9m	2'11"
A Stowed Length	12.9m	42'4"
Length-Transport (jib tucked)	11.4m	37'5"
B Overall Width	2.5m	8'2"
C Stowed Height	2.84m	9'4"
Height-Transport	3m	9'10"
D Wheelbase	2.85m	9'4"
E Ground Clearance	0.44m	1'5"
PRODUCTIVITY		
Max. Platform Occupancy	3	
Platform Capacity (unrestricted)	300kg	661 lbs
Platform Capacity (restricted)	450kg	992 lbs
Turntable Rotation	360°	
Drive Speed-Stowed	4.8km/h	3mph
Drive Speed-Raised	0.8km/h	0.5mph
Gradeability	45%	
Max. Wind Speed	12.5m/s	28mph
Turning Radius-Inside	3.66m	12'
Turning Radius-Outside	6.55m	21'6"
Max. Slope	4.5°/4.5°	
Tire Type	Foam-filled	
Tire Models	18-625	
Ground Pressure, Tyres	1102 kPa	159.8 psi
POWER		
Power Source	Deutz 55.4kW/74.3hp	
Fuel Tank Capacity	100L	26.4gal
HYDRAULIC SYSTEM		
Hydraulic Oil Volume	180L	47.6gal
WEIGHT		
Machine Weight	18,700kg	41,226 lbs

STANDARD FEATURES

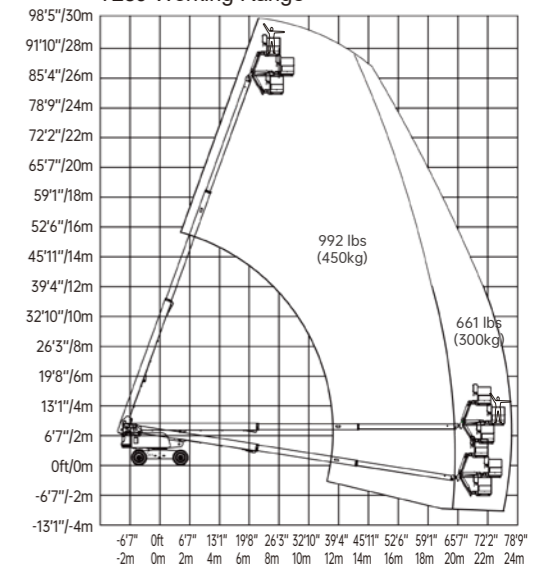
- Proportional control
- Tilt alarm with lift cut-out
- Overload sensing system
- Descent alarm with flashing beacon
- Platform auto-leveling system
- Emergency stop button
- On-board diagnostic system
- Oscillating axle
- Four-wheel drive and break
- Overtilt protection system
- Anti-crush protection
- Horn/Hour meter

OPTIONAL

- AC power to platform
- Platform tool box



T28J Working Range





SPECIFICATIONS

MODELS	T125J-2	
Measurements	Metric	Imperial
Work Height Max.	40.2m	131'11"
Platform Height Max.	38.2m	125'4"
Horizontal Outreach	22.3m	73'2"
Platform Length	2.44m	8'
Platform Width	0.9m	2'11"
A Stowed Length	14.31m	46'11"
Transport Length (jib tucked)	11.96m	39'3"
B Overall Width(axles retracted)	2.4m	7'10"
C Overall Width(axles extended)	4m	13'1"
D Stowed Height	2.74m	9'
Transport Height	3.15m	10'4"
E Wheelbase(axles retracted)	4.16m	13'8"
F Ground Clearance	0.34m	1'1"

PRODUCTIVITY		
Platform Capacity (unrestricted)	300kg	661 lbs
Platform Capacity (restricted)	450kg	992 lbs
Max. Platform Occupancy	2(unrestricted)/3(restricted)	
Turntable Rotation	360°	360°
Drive Speed-Stowed	5km/h	3.1mph
Drive Speed-Raised	0.6km/h	0.37mph
Gradeability	45%	45%
Max. Wind Speed	12.5m/s	28mph
Turning Radius-Inside (axles retracted)	6.6m	21'8"
Turning Radius-Outside (axles retracted)	9m	29'6"
Turning Radius-Inside (axles extended)	2.6m	8'6"
Turning Radius-Outside (axles extended)	6.2m	20'4"
Max. Slope	5°/5°	5°/5°
Tire Type	Foam-filled	
Tire Models	445/50D 710	
Ground Pressure, Tyres	1075.3 kPa	156 psi

POWER		
Power Source	Kubota 54.6kW/73.2hp	
Fuel Tank Capacity	150L	39.6gal

HYDRAULIC SYSTEM		
Hydraulic Oil Volume	220L	58.1gal

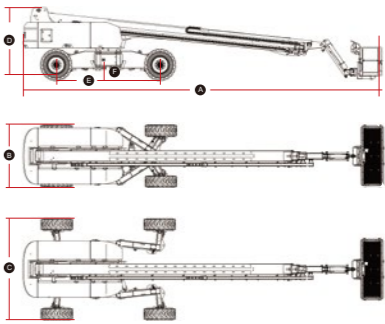
WEIGHT		
Machine Weight	19,100kg	42,108 lbs

STANDARD FEATURES

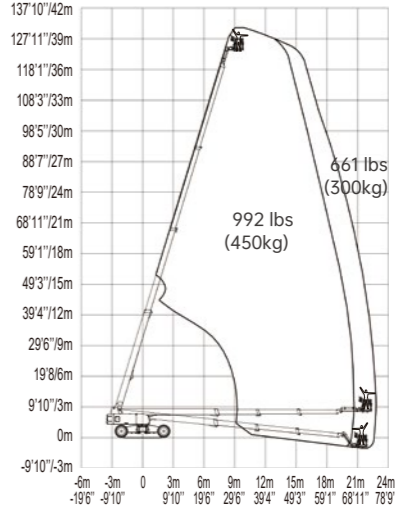
- OTA remote upgrade
- Intelligent self-diagnosis function
- Auto-leveling platform
- Hydraulic rotating platform 180°
- Full proportional joystick control
- Load sensitive system
- Over-tilt protection system
- Emergency stop button
- Descent alarm
- Flashing beacons
- Horn/Hour meter
- Dual load 300kg/450kg
- Over-head anti-collision protection
- Full time active oscillating axles
- AC power to platform

OPTIONAL

- Platform work light
- Platform anti-collision module
- Half-height mesh platform
- Platform storage rack



T125J-2 Working Range



LGMG electric articulating boom aerial work platforms provide environmentally friendly, zero-emission operation for indoor and outdoor applications. The maximum working height ranges from 11 to 21.58 meters (36'1"/70'10").

- Proportional control ensures smooth driving, precise positioning and comfortable operation.
- Battery powered, zero emission, quiet drive and long battery duty cycle.
- Self-leveling platform together with hydraulic Jib rotation delivers exceptional productivity.
- Intelligent self-diagnostic system for quick troubleshooting.
- AR65JE are equipped with the oscillating, full-time floating axle, and three steering modes: four-wheel steering, crab steering and front-wheel steering.

SPECIFICATIONS

MODELS	A30JE		A43JE	
Measurements	Metric	Imperial	Metric	Imperial
Work Height Max.	11m	36'1"	15m	49'3"
Platform Height Max.	9m	29'6"	13m	42'8"
Horizontal Outreach	6.25m	20'6"	7.46m	24'6"
Up and Over Height	4.12m	13'6"	7.1m	23'4"
Platform Length	1.17m	3'10"	1.2m	3'11"
Platform Width	0.76m	2'6"	0.9m	2'11"
A Stowed Length	5.46m	17'11"	6.7m	22'
Length-Transport (jib tucked)	3.58m	11'9"	5.35m	17'7"
B Overall Width	1.19m	3'11"	1.5m	4'11"
C Stowed Height	2m	6'7"	1.98m	6'6"
Height-Transport	2.52m	8'3"	2.11m	6'11"
D Wheelbase	1.58m	5'2"	2.03m	6'8"
E Ground Clearance	0.09m	4"	0.2m	8"
PRODUCTIVITY				
Platform Capacity	230kg	507 lbs	200kg	441 lbs
Max. Platform Occupancy	2		2	
Turntable Rotation	355°	355°	355°	355°
Drive Speed-Stowed	5km/h	3.1mph	5km/h	3.1mph
Drive Speed-Raised	0.65km/h	0.4mph	0.8km/h	0.5mph
Gradeability	30%	30%	30%	30%
Max. Wind Speed	12.5m/s	28mph	12.5m/s	28mph
Turning Radius-Inside	1.65m	5'5"	2.2m	7'3"
Turning Radius-Outside	3.15m	10'4"	4.07m	13'4"
Max. Slope	2.5°/4.5°	2.5°/4.5°	3°/3°	3°/3°
Tire Type	Solid Non-marking		Solid Non-marking	
Tire Models	22x7		600x190	
Ground Pressure, Tyres	715 kPa	103.7 psi	1584.7 kPa	229.8 psi
POWER				
Lead-acid Battery	48V(8x6V),390Ah,FLA		48V(8x6V),330Ah,AGM	
Lithium Battery	/		48V 250Ah (A43JE-Li)	
HYDRAULIC SYSTEM				
Hydraulic Oil Volume	17L	4.5gal	25L	6.6gal
WEIGHT				
Machine Weight	6,700kg	14,771 lbs	6,950kg	15,322 lbs

SPECIFICATIONS

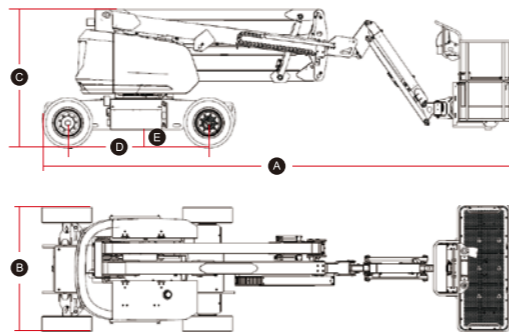
MODELS	A45JE	
Measurements	Metric	Imperial
Work Height Max.	15.8m	51'10"
Platform Height Max.	13.8m	45'3"
Horizontal Outreach	7.81m	25'7"
Up and Over Height	7.26m	23'10"
Platform Length	1.83m	6'
Platform Width	0.76m	2'6"
A Stowed Length	6.66m	21'10"
Length-Transport (jib tucked)	5.85m	19'2"
B Overall Width	1.8m	5'11"
C Stowed Height	1.98m	6'6"
Height-Transport	2.6m	8'6"
D Wheelbase	2.03m	6'8"
E Ground Clearance	0.24m	9"
PRODUCTIVITY		
Platform Capacity	230kg	507 lbs
Max. Platform Occupancy	2	
Turntable Rotation	355°	355°
Drive Speed-Stowed	4.8km/h	3mph
Drive Speed-Raised	1km/h	0.62mph
Gradeability	30%	30%
Max. Wind Speed	12.5m/s	28mph
Turning Radius-Inside	1.83m	6'
Turning Radius-Outside	4.1m	13'5"
Max. Slope	3°/3°	3°/3°
Tire Type	Foam-filled	
Tire Models	9-14.5	
Ground Pressure, Tyres	820.8 kPa	119 psi
POWER		
Lead-acid Battery	48V(8x6V),390Ah,FLA	
Lithium Battery	48V 280Ah (A45JE-Li)	
HYDRAULIC SYSTEM		
Hydraulic Oil Volume	30L	7.9gal
WEIGHT		
Machine Weight	7,500kg	16,535 lbs

STANDARD FEATURES

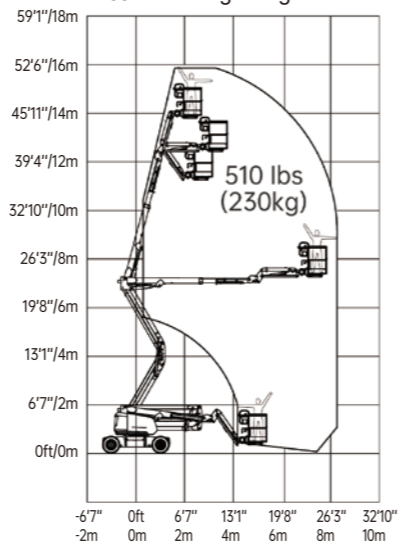
- Proportional control
- Horn/Hour meter
- Tilt alarm with lift cut-out
- Emergency stop button
- Anti-collision protection
- Platform auto-leveling system
- Platform tool box (A14JE)
- AC power to platform
- Full-height drive
- Overload sensing system
- Descent alarm with flashing beacon
- Telematics connector
- On-board diagnostic system

OPTIONAL

- Telematics
- Solid tires
- Biodegradable hydraulic oil



A45JE Working Range



LGMG diesel-powered articulating boom aerial work platforms are purpose-built for outdoor construction and industrial applications, with the maximum working height ranging from 12.75 to 21.58 meters (41'10"/70'10").

- The oscillating axles and four-wheel drive deliver better gradeability on rough terrain.
- Proportional smooth driving, precise positioning and comfortable operation.
- Self-leveling platform together with hydraulic Jib rotation delivers exceptional productivity.
- Swing out engine tray for easy access and maintenance.
- Intelligent self-diagnostic system for quick troubleshooting.
- AR45J-H and AR65J are fitted with the full-time active oscillating axle and three steering models: four-wheel steering, crab steering and front-wheel steering.

SPECIFICATIONS

MODELS	AR35J		AR45J		AR45J-H	
Measurements	Metric	Imperial	Metric	Imperial	Metric	Imperial
Work Height Max.	12.75m	41'10"	16.09m	52'9"	15.9m	52'2"
Platform Height	10.75m	35'3"	14.09m	46'3"	13.9m	45'7"
Horizontal Outreach	6.78m	22'3"	7.67m	25'2"	7.7m	25'3"
Up and Over Height	5.32m	17'5"	7.56m	24'10"	7.4m	24'3"
Platform Length	1.42m	4'8"	1.83m	6'	1.83m	6'
Platform Width	0.76m	2'6"	0.76m	2'6"	0.76m	2'6"
A Stowed Length	5.77m	18'11"	6.77m	22'3"	6.95m	22'10"
Length-Transport (jib tucked)	4.46m	14'8"	5.76m	18'11"	5.9m	19'4"
B Overall Width	1.85m	6'1"	2.31m	7'7"	2.3m	7'7"
C Stowed Height	2.06m	6'9"	2.17m	7'1"	2.24m	7'4"
Height-Transport	2.29m	7'6"	2.65m	8'8"	2.65m	8'8"
D Wheelbase	1.88m	6'2"	2.06m	6'9"	2.25m	7'5"
E Ground Clearance	0.19m	7"	0.36m	1'2"	0.35m	1'2"
PRODUCTIVITY						
Platform Capacity (unrestricted)	270kg	595 lbs	230kg	507 lbs	300kg	661 lbs
Platform Capacity (restricted)	/	/	/	/	450kg	992 lbs
Max. Platform Occupancy	2		2		2 (unrestricted) / 3 (restricted)	
Turntable Rotation	355°	355°	355°	355°	355°	355°
Drive Speed-Stowed	5km/h	3.1mph	6.1km/h	3.8mph	5km/h	3.1mph
Drive Speed-Raised	0.8km/h	0.5mph	0.8km/h	0.5mph	0.8km/h	0.5mph
Gradeability	45%	45%	45%	45%	45%	45%
Max. Wind Speed	12.5m/s	28mph	12.5m/s	28mph	12.5m/s	28mph
Turning Radius-Inside	2.6m	8'6"	1.94m	6'4"	1.67m	5'6"
Turning Radius-Outside	4.7m	15'5"	4.41m	14'6"	3.66m	12'
Max. Slope	3°/4.5°	3°/4.5°	4.5°/4.5°	4.5°/4.5°	5°/5°	5°/5°
Tire Type	Foam-filled Non-marking		Foam-filled		Foam-filled	
Tire Models	10-16.5		315/55D20		315/55D20	
Ground Pressure, Tyres	289 kPa	41.9 psi	587.89 kPa	85.3 psi	520 kPa	75.4 psi
POWER						
Power Source	Kubota 18.2kW/24.4hp		Kubota 36kW/48.3hp Deutz 36.4kW/48.8hp		Kubota 36kW/48.3hp	
Fuel Tank Capacity	40L	10.6gal	65L	17.2gal	65L	17.2gal
HYDRAULIC SYSTEM						
Hydraulic Oil Volume	58L	15.3gal	130L	34.3gal	75L	19.8gal
WEIGHT						
Machine Weight	5,400kg	11,905 lbs	7,160kg	15,785 lbs	7,400kg	16,314 lbs

SPECIFICATIONS

MODELS	AR52J		AR65J	
Measurements	Metric	Imperial	Metric	Imperial
Work Height Max.	17.7m	58'1"	21.58m	70'10"
Platform Height	15.7m	51'6"	19.58m	64'3"
Horizontal Outreach	9.39m	30'10"	12.37m	40'7"
Up and Over Height	7.56m	24'10"	8.19m	26'10"
Platform Length	1.83m	6'	2.44m	8'
Platform Width	0.76m	2'6"	0.9m	2'11"
Ⓐ Stowed Length	7.56m	24'10"	9.42m	30'11"
Length-Transport (jib tucked)	6.17m	20'3"	7.63m	25'
Ⓑ Overall Width	2.31m	7'7"	2.5m	8'2"
Ⓒ Stowed Height	2.17m	7'1"	2.46m	8'1"
Height-Transport	2.57m	8'5"	2.96m	9'9"
Ⓓ Wheelbase	2.06m	6'9"	2.51m	8'3"
Ⓔ Ground Clearance	0.36m	1'2"	0.4m	1'4"
PRODUCTIVITY				
Platform Capacity (unrestricted)	230kg	510 lbs	260kg	573 lbs
Platform Capacity (restricted)	/	/	350kg	772 lbs
Max. Platform Occupancy	2		2 (unrestricted) / 3 (restricted)	
Turntable Rotation	355°	355°	360°	360°
Drive Speed-Stowed	6.1km/h	3.8mph	5km/h	3.1mph
Drive Speed-Raised	0.8km/h	0.5mph	0.8km/h	0.5mph
Gradeability	45%	45%	45%	45%
Max. Wind Speed	12.5m/s	28mph	12.5m/s	28mph
Turning Radius-Inside	1.94m	6'4"	1.9m	6'3"
Turning Radius-Outside	4.41m	14'6"	3.9m	12'10"
Max. Slope	4.5°/4.5°	4.5°/4.5°	4°/4°	4°/4°
Tire Type	RT Foam-filled		RT Foam-filled	
Tire Models	315/55D20		355/55D625	
Ground Pressure, Tyres	624.2 kPa	90.5 psi	523.12 kPa	75.9 psi
POWER				
Power Source	Kubota 36kW/48.3hp Deutz 36.4kW/48.8hp		Kubota 36kW/48.3hp	
Fuel Tank Capacity	65L	17.2gal	65L	17.2gal
HYDRAULIC SYSTEM				
Hydraulic Oil Volume	130L	34.3gal	115L	30.4gal
WEIGHT				
Machine Weight	8,180kg	18,034 lbs	9,850kg	21,715 lbs

SPECIFICATIONS

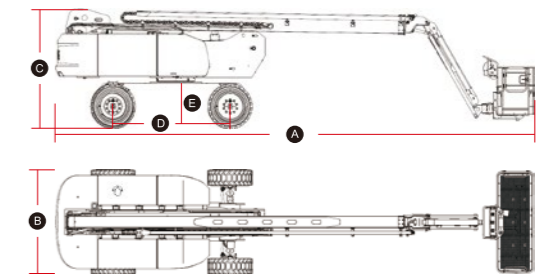
MODELS	AR80J	
Measurements	Metric	Imperial
Work Height Max.	26.6m	87'3"
Platform Height Max.	24.6m	80'9"
Horizontal Outreach	18m	59'1"
Up and Over Height	8.83m	28'11"
Platform Length	2.44m	8'
Platform Width	0.9m	2'11"
Ⓐ Stowed Length	11.6m	36'1"
Length-Transport (jib tucked)	9.07m	29'9"
Ⓑ Overall Width	2.5m	8'2"
Ⓒ Stowed Height	2.83m	9'3"
Height-Transport	3.36m	11'
Ⓓ Wheelbase	2.85m	9'4"
Ⓔ Ground Clearance	0.4m	1'4"
PRODUCTIVITY		
Platform Capacity (unrestricted)	250kg	551 lbs
Platform Capacity (restricted)	350kg	772 lbs
Max. Platform Occupancy	2 (unrestricted) / 3 (restricted)	
Turntable Rotation	360°	360°
Drive Speed-Stowed	5km/h	3.1mph
Drive Speed-Raised	0.8km/h	0.5mph
Gradeability	45%	45%
Max. Wind Speed	12.5m/s	28mph
Turning Radius-Inside	2.04m	6'8"
Turning Radius-Outside	4.13m	13'7"
Max. Slope	5°/5°	5°/5°
Tire Type	RT Foam-filled	
Tire Models	15-625	
Ground Pressure, Tyres	874.13 kPa	126.8 psi
POWER		
Power Source	Kubota 36kW/48.3hp	
Fuel Tank Capacity	100L	26.4gal
HYDRAULIC SYSTEM		
Hydraulic Oil Volume	162L	42.8gal
WEIGHT		
Machine Weight	17,300kg	38,139 lbs

STANDARD FEATURES

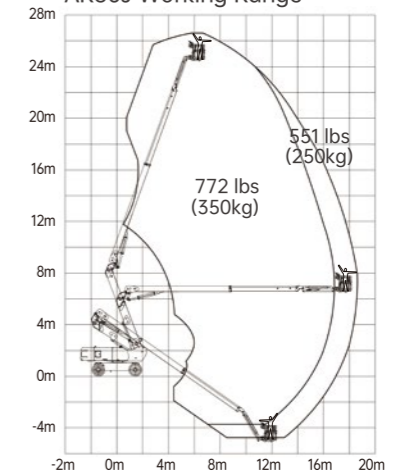
- Proportional control
- Horn/Hour meter
- Tilt alarm with lift cut-out
- Emergency stop button
- Anti-collision protection
- Platform auto-leveling system
- On-board diagnostic system
- Full-height drive
- Overload sensing system
- Descent alarm with flashing beacon
- Telematics connector
- Oscillating axle
- Platform tool box
- AC power to platform

OPTIONAL

- Telematics
- Half-height mesh platform
- Hydraulic generator kit
- Cold weather package
- Auxiliary rail
- Biodegradable hydraulic oil



AR80J Working Range





- The large platform with high capacity maximises productivity.
- Battery powered, zero emission and quiet drive mean this machine is environmentally friendly.
- Equipped with oscillating axles that provide excellent performance in soft and rough terrain conditions.
- Hydraulic outriggers deliver a better solution on uneven ground.
- Intelligent self-diagnostic system for quick troubleshooting.

SPECIFICATIONS

MODELS	SR2669E		SR3369E		SR4069E	
	Metric	Imperial	Metric	Imperial	Metric	Imperial
Measurements						
Work Height Max.	9.7m	31'10"	11.7m	38'5"	13.9m	45'7"
A Platform Height-Raised	7.7m	25'3"	9.7m	31'10"	11.9m	39'
B Platform Height-Stowed	1.41m	4'8"	1.41m	4'8"	1.56m	5'1"
C Platform Length	2.79m	9'2"	2.79m	9'2"	2.79m	9'2"
D Platform Width	1.6m	5'3"	1.6m	5'3"	1.6m	5'3"
E Overall Length	3.76m	12'4"	3.76m	12'4"	3.76m	12'4"
F Overall Width	1.79m	5'10"	1.79m	5'10"	1.79m	5'10"
G Overall Height-Rails up	2.58m	8'6"	2.55m	8'4"	2.7m	8'10"
Overall Height-Rails down	1.92m	6'4"	1.89m	6'2"	2.04m	6'8"
Extension Deck	1.52m	5'	1.52m	5'	1.52m	5'
H Wheelbase	2.29m	8'	2.29m	8'	2.29m	8'
Ground Clearance-Center	0.23m	9"	0.23m	9"	0.23m	9"
PRODUCTIVITY						
Max. Platform Occupancy(In/Out)	4 / 4		4 / 2		3 / 2	
Platform Capacity	680kg	1,500 lbs	454kg	1,000 lbs	365kg	805 lbs
Platform Capacity-Extension	140kg	310 lbs	140kg	310 lbs	140kg	310 lbs
Drive Height	Full Height		Full Height		Full Height	
Gradeability-Stowed	40%	40%	35%	35%	35%	35%
Min. Turning Radius	4.75m	15'7"	4.75m	15'7"	4.75m	15'7"
Raise/Lower Speed	35s / 30s		39s / 46s		61s / 55s	
Brakes	Rear-wheel Brake		Rear-wheel Brake		Rear-wheel Brake	
Drive Mode	4x2		4x2		4x2	
Tire Type	Foam-filled Non-marking		Foam-filled Non-marking		Foam-filled Non-marking	
Tire Size	663x283mm	26"x11"	663x283mm	26"x11"	663x283mm	26"x11"
Ground Pressure, Tyres	492.07 kPa	71.4 psi	526.37 kPa	76.3 psi	577.09 kPa	83.7 psi
POWER						
Power Source	48V (8x6V),315Ah,FLA		48V (8x6V),315Ah,FLA		48V (8x6V),315Ah,FLA	
HYDRAULIC SYSTEM						
Hydraulic Oil Volume	50L	13.21gal	70L	18.5gal	70L	18.5gal
WEIGHT						
Machine Weight	4,190kg	9,237 lbs	4,350kg	9,570 lbs	5,100kg	11,245 lbs

SPECIFICATIONS

MODELS	SR3390E		SR4390E		SR5390E	
Measurements	Metric	Imperial	Metric	Imperial	Metric	Imperial
Work Height Max.	12m	39'4"	15m	49'3"	17.9m	58'9"
A Platform Height-Raised	10m	32'10"	13m	42'8"	15.9m	52'2"
B Platform Height-Stowed	1.69m	5'7"	1.91m	6'3"	2.13m	7'
C Platform Length	4.81m	15'9"	4.81m	15'9"	4.81m	15'9"
D Platform Width	1.83m	6'	1.83m	6'	1.83m	6'
E Overall Length	4.9m	16'1"	4.9m	16'1"	4.9m	16'1"
F Overall Width	2.3m	7'7"	2.3m	7'7"	2.3m	7'7"
G Overall Height-Rails up	2.79m	9'2"	3.01m	9'11"	3.23m	10'7"
Overall Height-Rails down	2.19m	7'2"	2.31m	7'7"	2.53m	8'4"
Extension Deck	1.45/1.14m	4'9"/3'9"	1.45/1.14m	4'9"/3'9"	1.45/1.14m	4'9"/3'9"
H Wheelbase	2.85m	9'4"	2.85m	9'4"	2.85m	9'4"
Ground Clearance-Center	0.26m	10"	0.26m	10"	0.26m	10"
PRODUCTIVITY						
Max. Platform Occupancy(In/Out)	7 / 7		5 / 5		4 / 4	
Platform Capacity	1,100kg	2,430 lbs	680kg	1,500 lbs	680kg	1,500 lbs
Platform Capacity-Extension	230kg	510 lbs	230kg	510 lbs	230kg	510 lbs
Drive Height	Full Height		Full Height		8.5m	27'11"
Gradeability-Stowed	40%	40%	40%	40%	40%	40%
Min. Turning Radius	6.57m	21'7"	6.57m	21'7"	6.57m	21'7"
Raise/Lower Speed	60s / 50s		60s / 50s		70s / 50s	
Brakes	Four-wheel Brake		Four-wheel Brake		Four-wheel Brake	
Drive Mode	4x4		4x4		4x4	
Tire Type	Solid Non-marking		Solid Non-marking		Solid Non-marking	
Tire Size	835x290mm	33"x11"	835x290mm	33"x11"	835x290mm	33"x11"
Ground Pressure, Tyres	887.37 kPa	128.7 psi	887.71 kPa	128.8 psi	888.31 kPa	128.8 psi
POWER						
Power Source	80V 228Ah		80V 228Ah		80V 228Ah	
HYDRAULIC SYSTEM						
Hydraulic Oil Volume	80L	21.1gal	80L	21.1gal	80L	21.1gal
WEIGHT						
Machine Weight	6,980kg	15,400 lbs	7,460kg	16,450 lbs	8,300kg	18,298 lbs





- Larger work platform with high capacity offers great productivity.
- Powerful diesel engine, oscillating axels and four-wheel drive provide better performance on most rough terrain job sites.
- The overload system and motion alarm help the operator to complete the job in a much safer way.
- Pull-out engine tray for easy access and maintenance.
- On-board self-diagnosis system makes it easier for quick troubleshooting.

SPECIFICATIONS

MODELS	SR2669D		SR3369D		SR4069D	
Measurements	Metric	Imperial	Metric	Imperial	Metric	Imperial
Work Height Max.	9.7m	31'10"	11.7m	38'5"	13.9m	45'7"
A Platform Height-Raised	7.7m	25'3"	9.7m	31'10"	11.9m	39'1"
B Platform Height-Stowed	1.41m	4'8"	1.41m	4'8"	1.56m	5'1"
C Platform Length	2.79m	9'2"	2.79m	9'2"	2.79m	9'2"
D Platform Width	1.6m	5'3"	1.6m	5'3"	1.6m	5'3"
E Overall Length (with ladder)	3.76m	12'4"	3.76m	12'4"	3.76m	12'4"
F Overall Width	1.79m	5'10"	1.79m	5'10"	1.79m	5'10"
G Overall Height-Rails up	2.58m	8'6"	2.55m	8'4"	2.7m	8'10"
Overall Height-Rails down	1.92m	6'4"	1.89m	6'2"	2.04m	6'8"
Extension Deck	1.52m	5'	1.52m	5'	1.52m	5'
H Wheelbase	2.29m	7'6"	2.29m	7'6"	2.29m	7'6"
Ground Clearance-Center	0.23m	9"	0.23m	9"	0.23m	9"
PRODUCTIVITY						
Max. Platform Occupancy(In/Out)	4 / 4		4 / 2		3 / 2	
Platform Capacity	680kg	1,499 lbs	454kg	1,000 lbs	365kg	805 lbs
Platform Capacity-Extension	140kg	310 lbs	140kg	310 lbs	140kg	310 lbs
Drive Height	Full Height		Full Height		Full Height	
Gradeability-Stowed	40%	40%	35%	35%	35%	35%
Min. Turning Radius	4.75m	15'7"	4.75m	15'7"	4.75m	15'7"
Raise/Lower Speed	35s / 30s		39s / 46s		61s / 55s	
Brakes	Four-wheel Brake		Four-wheel Brake		Four-wheel Brake	
Drive Mode	4x4		4x4		4x4	
Tire Type	RT Foam-filled		RT Foam-filled		RT Foam-filled	
Tire Size	663x283mm	26"x11"	663x283mm	26"x11"	663x283mm	26"x11"
Ground Pressure, Tyres	490.41 kPa	71.1 psi	524.48 kPa	76.1 psi	575.46 kPa	83.5 psi
POWER						
Diesel Engine	Kubota 18.5kW/24.8hp		Kubota 18.5kW/24.8hp		Kubota 18.5kW/24.8hp	
Dual Fuel Engine (optional) *	Kubota 20.5kW/27.5hp Gas/LPG Dual Fuel		Kubota 20.5kW/27.5hp Gas/LPG Dual Fuel		Kubota 20.5kW/27.5hp Gas/LPG Dual Fuel	
Fuel Tank Capacity	53L	14gal	53L	14gal	53L	14gal
HYDRAULIC SYSTEM						
Hydraulic Oil Volume	50L	13.2gal	50L	13.2gal	50L	13.2gal
WEIGHT						
Machine Weight	4,170kg	9,193 lbs	4,330kg	9,545 lbs	5,080kg	11,200 lbs

* Please consult us for detailed parameters of the dual fuel version.

SPECIFICATIONS

MODELS	SR3390D		SR4390D		SR5390D	
	Metric	Imperial	Metric	Imperial	Metric	Imperial
Measurements						
Work Height Max.	12m	39'4"	15m	49'3"	17.9m	58'9"
A Platform Height-Raised	10m	32'10"	13m	42'8"	15.9m	52'2"
B Platform Height-Stowed	1.58m	5'2"	1.83m	6'	2.08m	6'10"
C Platform Length	3.98/4.81m	13'1"/15'9"	3.98/4.81m	13'1"/15'9"	3.98/4.81m	13'1"/15'9"
D Platform Width	1.83m	6'	1.83m	6'	1.83m	6'
E Overall Length (with ladder)	4.9m	16'1"	4.9m	16'1"	4.9m	16'1"
F Overall Width	2.3m	7'7"	2.3m	7'7"	2.3m	7'7"
G Overall Height-Rails up	2.74m	9'	2.96m	9'9"	3.18m	10'5"
Overall Height-Rails down	2.06m	6'9"	2.28m	7'6"	2.5m	8'2"
Extension Deck	1.45/1.14m	4'9"/3'9"	1.45/1.14m	4'9"/3'9"	1.45/1.14m	4'9"/3'9"
H Wheelbase	2.85m	9'4"	2.85m	9'4"	2.85m	9'4"
Ground Clearance-Center	0.23m	9"	0.23m	9"	0.23m	9"
PRODUCTIVITY						
Max. Platform Occupancy(In/Out)	7 / 7		7 / 7		4 / 4	
Platform Capacity	1,100kg	2,430 lbs	680kg	1,500 lbs	680kg	1,500 lbs
Platform Capacity-Extension	230kg	510 lbs	230kg	510 lbs	230kg	510 lbs
Drive Height	Full Height		Full Height		8.5m	27'11"
Gradeability-Stowed	40%	40%	40%	40%	40%	40%
Min. Turning Radius	5.33m	17'6"	5.33m	17'6"	5.33m	17'6"
Raise/Lower Speed	45s / 45s		55s / 55s		55s / 55s	
Brakes	Four-wheel Brake		Four-wheel Brake		Four-wheel Brake	
Drive Mode	4x4		4x4		4x4	
Tire Type	Solid		Solid		Solid	
Tire Size	835x290mm	33"x11"	835x290mm	33"x11"	835x290mm	33"x11"
Ground Pressure, Tyres	887.37 kPa	128.7 psi	887.71 kPa	128.8 psi	888.31 kPa	128.8 psi
POWER						
Power Source	Kubota 36kW/48.3hp Deutz 36.4kW/48.8hp		Kubota 36kW/48.3hp Deutz 36.4kW/48.8hp		Kubota 36kW/48.3hp Deutz 36.4kW/48.8hp	
Fuel Tank Capacity	100L	26.4gal	100L	26.4gal	100L	26.4gal
HYDRAULIC SYSTEM						
Hydraulic Oil Volume	140L	37gal	140L	37gal	140L	37gal
WEIGHT						
Machine Weight (7.4m platform)	6,980kg	15,400 lbs	7,460kg	16,450 lbs	8,200kg	18,080 lbs
Machine Weight (6.58m platform)	6,880kg	15,170 lbs	7,360kg	16,230 lbs	8,100kg	17,860 lbs

STANDARD FEATURES

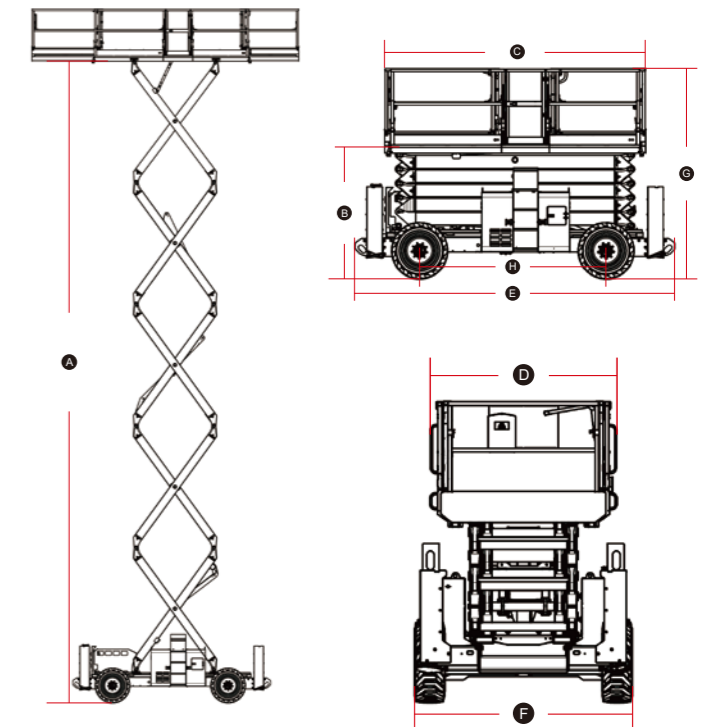
- Proportional control
- Foldable guardrail
- Emergency stop device
- Manual brake release
- Emergency descent
- Oscillating axle
- Self-lock entry gate
- Tilt alarm with lift cut-out
- Overload sensing system
- Descent alarm with flashing beacon
- All motions alarm
- Intelligent diagnostic system
- RT Foam-filled tires

OPTIONAL

- AC power to platform
- Telematics
- Foam-filled non-marking tires
- Foam-filled tires
- Solid non-marking tires
- Solid tires
- Biodegradable hydraulic oil
- Pipe racks (SR3390D/SR4390D/SR5390D)

* The features are for electric and diesel RT scissor lifts.

MACHINE SIZE





LGMG's micro scissors are ideal solutions for the low-level access and space restricted application job sites. Shorten overall machine length, lighter weight and compact design make the machine suitable for most elevators.

- Battery powered, zero emission, and quiet drive make the machine environmentally friendly.
- Efficient electric drive system provides longer-lasting performance and better gradeability.
- Exceptional waterproofed drive system design provides excellent performance in wet conditions.

SPECIFICATIONS

MODELS	SS1230E		SS1432E		SS1532ER		SS1932ER	
	Metric	Imperial	Metric	Imperial	Metric	Imperial	Metric	Imperial
Measurements								
Work Height Max.	5.6m	18'4"	6.3m	20'8"	6.5m	21'4"	7.5m/6.5m (in/out)	24'7"/21'4" (in/out)
A Platform Height-Raised	3.6m	11'10"	4.3m	14'1"	4.5m	14'9"	5.5m/4.5m (in/out)	18'1"/14'9" (in/out)
B Platform Length	1.35m	4'5"	1.35m	4'5"	1.38m	4'6"	1.38m	4'6"
C Platform Width	0.7m	2'4"	0.7m	2'4"	0.7m	2'4"	0.7m	2'4"
D Overall Length	1.53m	5'	1.53m	5'	1.55m	5'1"	1.55m	5'
E Overall Width	0.76m	2'6"	0.81m	2'8"	0.81m	2'8"	0.81m	2'8"
F Overall Height-Rails Up	2.06m	6'9"	2.15m	7'1"	1.92m	6'4"	2m	6'7"
G Overall Height-Rails Down	1.65m	5'5"	1.76m	5'9"	/		/	
H Extension Deck	0.6m	2'	0.6m	2'	0.6m	2'	0.6m	2'
I Wheelbase	1.12m	3'8"	1.12m	3'8"	1.125m	3'8"	1.125m	3'8"
Ground Clearance (Stowed/Raised)	50/16mm	2"/0.6"	50/16mm	2"/0.6"	62/20mm	2.4"/0.79"	62/20mm	2.4"/0.79"
PRODUCTIVITY								
Max. Platform Occupancy (In/Out)	2 / 1		2 / 0		2 / 1		2 / 1	
Platform Capacity	240kg	530 lbs	230kg	510 lbs	227kg	500 lbs	227kg	500 lbs
Platform Capacity-Extension	120kg	265 lbs	120kg	265 lbs	113kg	250 lbs	113kg	250 lbs
Drive Height	Full Height		Full Height		Full Height		Full Height	
Gradeability-Stowed	25%		25%		25%		25%	
Min. Turning Radius	1.5m	4'11"	1.5m	4'11"	1.8m	5'11"	1.8m	5'11"
Raise/Lower Speed	25s / 18s		25s / 20s		25 / 20s		35s / 25s	
Brakes	Front-wheel Brake		Front-wheel Brake		Rear-wheel Brake		Rear-wheel Brake	
Drive Mode	4x2		4x2		4x2		4x2	
Tire Type	Solid Non-marking		Solid Non-marking		Solid Non-marking		Solid Non-marking	
Tire Size	230x80mm	9"x3"	230x80mm	9"x3"	250x80mm	10"x3"	250x80mm	10"x3"
POWER								
Power Source	24V (2x12V),115Ah,FLA		24V (2x12V),150Ah,FLA		24V (2x12V),115Ah,FLA		24V (2x12V),115Ah,FLA	
HYDRAULIC SYSTEM								
Hydraulic Oil Capacity	4L	1gal	4L	1gal	4L	1gal	4L	1.1gal
WEIGHT								
Machine Weight	880kg	1,940 lbs	985kg	2,172 lbs	1,040kg	2,293 lbs	1,040kg	2,293 lbs

SPECIFICATIONS

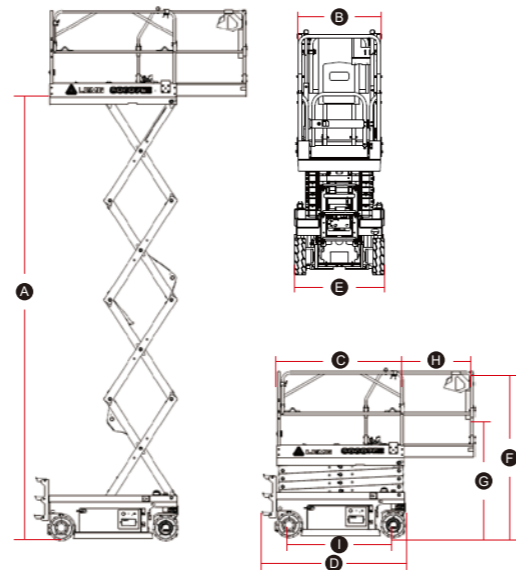
MODELS	SS2632E	
Measurements	Metric	Imperial
Work Height Max.	9.6m/7.5m (in/out)	30'11"/24'1" (in/out)
A Platform Height-Raised	7.6m/5.5m (in/out)	24'11"/18'1" (in/out)
B Platform Length	1.7m	5'7"
C Platform Width	0.73m	2'5"
D Overall Length	1.9m	6'3"
E Overall Width	0.81m	2'8"
F Overall Height-Rails Up	2.23m	7'4"
G Overall Height-Rails Down	1.93m	6'4"
H Extension Deck	0.9m	2'11"
I Wheelbase	1.4m	4'7"
Ground Clearance (Stowed/Raised)	72/20mm	3"/1"
PRODUCTIVITY		
Max. Platform Occupancy (In/Out)	2 / 1	
Platform Capacity	227kg	500 lbs
Platform Capacity-Extension	113kg	250 lbs
Drive Height	Full Height	
Gradeability-Stowed	25%	
Min. Turning Radius	1.49m	4'11"
Raise/Lower Speed	31s / 27s	
Brakes	Front-wheel Brake	
Drive Mode	4x2	
Tire Type	Solid Non-marking	
Tire Size	305x100mm	12"x4"
POWER		
Power Source	24V (2x12V),150Ah	
HYDRAULIC SYSTEM		
Hydraulic Oil Capacity	8.5L	2.25gal
WEIGHT		
Machine Weight	1,980kg	4,365 lbs

STANDARD FEATURES

- Proportional control
- Emergency descent
- Emergency stop button
- Driveable at full height
- Flashing beacons
- Horn/Hour meter
- Pothole protection
- AC power to platform
- Motion alarm
- Telematics connector
- Intelligent diagnostic system
- Automatic braking system
- Over-tilt protection system
- Charging protection system
- Safety check for service
- Standard forklift pockets for transport
- Overload sensing system
- One-way platform extension deck

OPTIONAL

- Telematics
- Pipe cradle
- Anti-collision protection
- Step deck



SCISSOR LIFT RANGE



SPECIFICATIONS

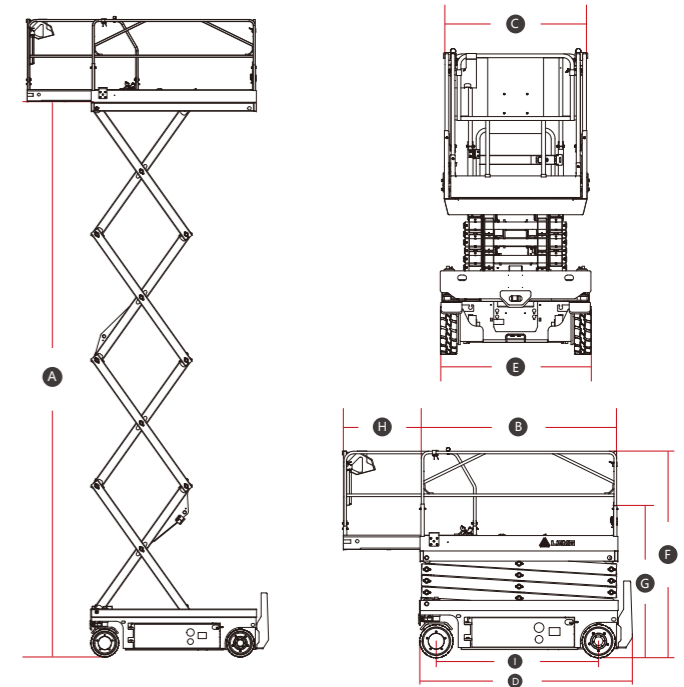
MODELS	S1932EII		S2632EII		S2646EII	
Measurements	Metric	Imperial	Metric	Imperial	Metric	Imperial
Work Height Max.	7.8m	25'7"	9.8/8m (in/out)	32'2"/26'3" (in/out)	10m	32'10"
A Platform Height-Raised	5.8m	19'	7.8/6m (in/out)	25'7"/19'8" (in/out)	8m	26'3"
B Platform Length	1.64m	5'5"	2.26m	7'5"	2.26m	7'5"
C Platform Width	0.73m	2'5"	0.79m	2'7"	1.12m	3'8"
D Overall Length	1.83m	6'	2.44m	8'	2.49m	8'2"
E Overall Width	0.79m	2'7"	0.83m	2'9"	1.18m	3'10"
F Overall Height-Guardrails Up	2.16m	7'1"	2.28m	7'6"	2.36m	7'9"
G Overall Height-Guardrails Down	1.81m	5'11"	1.9m	6'3"	1.55m	5'1"
H Extension Deck	0.9m	2'11"	0.9m	2'11"	0.9m	2'11"
I Wheelbase	1.35m	4'5"	1.85m	6'1"	1.85m	6'1"
Ground Clearance (Stowed/Raised)	78/26mm	3"/1"	100/20mm	4"/1"	100/20mm	4"/1"
PRODUCTIVITY						
Max. Platform Occupancy	2(in) / 1(out)		2(in) / 1(out)		2(in) / 1(out)	
Platform Capacity	230kg	507 lbs	230kg	507 lbs	450kg	990 lbs
Platform Capacity-Extension Deck	120kg	265 lbs	120kg	265 lbs	120kg	265 lbs
Drive Height	Full Height					
Gradeability-Stowed	25%	25%	25%	25%	25%	25%
Min. Turning Radius	1.8m	5'11"	2.2m	7'3"	2.45m	8'
Raise/Lower Speed	16s / 28s	16s / 28s	31s / 40s	31s / 40s	35s / 40s	35s / 40s
Brakes	Front-wheel Brake					
Drive Mode	4x2	4x2	4x2	4x2	4x2	4x2
Tire Type	Solid Non-marking					
Tire Size	323x100mm	12"x4"	380x130mm	15"x5"	380x130mm	15"x5"
Ground Pressure, Tyres	978 kPa	141.8 psi	1,002 kPa	145.3 psi	1,154 kPa	167.4 psi
POWER						
Power Source	24V (4x6V),225Ah,FLA		24V (4x6V),225Ah,FLA		24V (4x6V),240Ah,FLA	
Power Source	24V (4x6V),185Ah,AGM		24V (4x6V),220Ah,AGM		24V (4x6V),226Ah,AGM	
HYDRAULIC SYSTEM						
Hydraulic Oil Capacity	5L	1.3gal	13L	3.4gal	16L	4.2gal
WEIGHT						
Machine Weight	1,610kg	3,549 lbs	2,200kg	4,850 lbs	2,318kg	5,110 lbs

SPECIFICATIONS

MODELS	S3246EII		S4046EII		S4650EII	
Measurements	Metric	Imperial	Metric	Imperial	Metric	Imperial
Work Height Max.	12m	39'4"	14/9.5m (in / out)	45'11"/31'2" (in / out)	15.8/10m (in / out)	51'10"/32'9" (in / out)
A Platform Height-Raised	10m	32'10"	12/7.5m (in / out)	39'4"/24'7" (in / out)	13.8/8m (in / out)	45'3"/26'3" (in / out)
B Platform Length	2.26m	7'5"	2.26m	7'5"	2.64m	8'8"
C Platform Width	1.12m	3'8"	1.12m	3'8"	1.12m	3'8"
D Overall Length	2.49m	8'2"	2.49m	8'2"	2.8m	9'2"
E Overall Width	1.18m	3'10"	1.18m	3'10"	1.3m	4'3"
F Overall Height-Guardrails Up	2.49m	8'2"	2.63m	8'8"	2.74m	9'
G Overall Height-Guardrails Down	1.68m	5'6"	1.8m	5'11"	1.94m	6'4"
H Extension Deck	0.9m	2'11"	0.9m	2'11"	0.9m	2'11"
I Wheelbase	1.85m	6'1"	1.85m	6'1"	2.22m	7'3"
Ground Clearance (Stowed/Raised)	100/20mm	4"/1"	100/20mm	4"/1"	105/20mm	4"/1"
PRODUCTIVITY						
Max. Platform Occupancy	2 / 1		2 / 1		2 / 1	
Platform Capacity	320kg	705 lbs	320kg	705 lbs	320kg	705 lbs
Platform Capacity-Extension Deck	120kg	265 lbs	120kg	265 lbs	120kg	265 lbs
Drive Height	Full Height					
Gradeability-Stowed	25%		25%		25%	
Min. Turning Radius	2.45m	8'	2.45m	8'	2.85m	9'4"
Raise/Lower Speed	58s / 48s		65s / 60s		80s / 65s	
Brakes	Front-wheel Brake					
Drive Mode	4x2		4x2		4x2	
Tire Type	Solid Non-marking					
Tire Size	380x130mm	15"x5"	380x130mm	15"x5"	380x130mm	15"x5"
Ground Pressure, Tyres	1,355 kPa	196.5 psi	1,277 kPa	185.2 psi	1,378 kPa	199.9 psi
POWER						
Power Source	24V (4x6V),240Ah,FLA		24V (4x12V),300Ah,FLA		24V (4x12V),300Ah,FLA	
Power Source	24V (4x6V),226Ah,AGM		24V (4x6V),226Ah,AGM		24V (4x12V),280Ah,AGM	
HYDRAULIC SYSTEM						
Hydraulic Oil Capacity	23L	6.1gal	23L	6.1gal	25.5L	6.7gal
WEIGHT						
Machine Weight	2,995kg	6,603 lbs	2,970kg	6,548 lbs	3,500kg	7,716 lbs

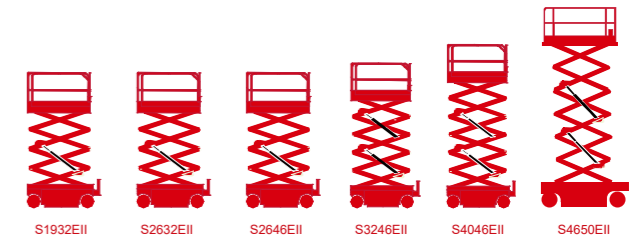
STANDARD FEATURES

- Proportional control
- Foldable guardrail
- Emergency stop device
- Manual brake release
- Emergency descent
- Swing-out component tray
- Pothole guard
- Self-lock entry gate
- Tilt alarm with lift cut-out
- Overload sensing system
- Descent alarm with flashing beacon
- All motions alarm
- Full-height drive
- Intelligent diagnostic system
- Telematics connector
- Solid non-marking tires



OPTIONS

- AC power to platform
- Telematics
- anti-collision rod
- Maintenance-free battery
- Voice alarm system
- Biodegradable hydraulic oil





LGMG's vertical mast lifts feature compact size and high maneuverability, providing excellent agility and convenience in constricted areas.

- With narrow chassis and low stowed height, the machine can be transported easily through doorways and in passenger elevators.
- Small inside turning radius allows for flexible use in narrow spaces, improving work efficiency.
- One-side extension deck enlarges the working scope and enhances productivity.

SPECIFICATIONS

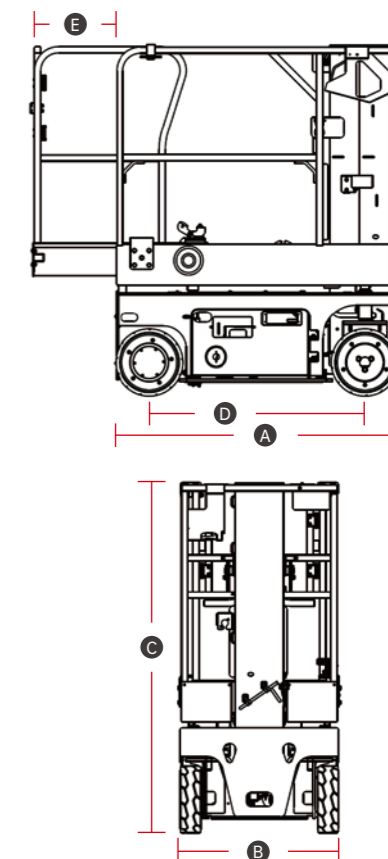
MODELS	M1230TE		M1932TE	
Measurements	Metric	Imperial	Metric	Imperial
Working Height Max.	5.7m	18'8"	7.6/6.2m in/out	24'11"/20'4" in/out
Platform Height	3.7m	12'2"	5.6/4.2m in/out	18'4"/13'9" in/out
Platform Size	1.33x0.75m	52"x30"	0.98x0.76m	39"x30"
A Overall Length	1.39m	4'7"	1.4m	4'7"
B Overall Width	0.76m	2'6"	0.79m	2'7"
C Overall Height (Stowed)	1.69m	5'6"	1.99m	6'6"
D Wheelbase	1.04m	3'5"	1.15m	3'9"
E Extension Deck	0.4m	1'4"	0.5m	1'8"
Ground Clearance (Stowed)	68mm	3"	68mm	3"
PRODUCTIVITY				
Max. Platform Occupancy	1 (in) / 0 (out)		1(in) / 1(out)	
Platform Capacity	230kg	507 lbs	200kg	441 lbs
Platform Capacity-Extension Deck	113kg	249 lbs	113kg	249 lbs
Drive Mode	Front-wheel Brake		Rear wheels drive	
Drive speed (Stowed)	4km/h	2.5mph	4km/h	2.5mph
Drive speed (Raised)	0.5km/h	0.31mph	0.5km/h	0.31mph
Gradeability	25%		25%	
Tire size	323x100mm	13"x4"	250x80mm	10"x3"
POWER				
Power Source	24V,145Ah,AGM		24V,145Ah,AGM	
HYDRAULIC SYSTEM				
Hydraulic Oil Capacity	5.5L	1.5gal	4.5L	1.2 gal
WEIGHT				
Machine Weight	840kg	1,852 lbs	1,150kg	2,535 lbs

STANDARD FEATURES

- Proportional controls
- Horn/Hour meter
- Emergency stop device
- Emergency descent
- Charging protection system
- Descent alarm with flashing beacon
- Pothole guard
- Full-height drive
- Tilt alarm
- Platform tool box
- Telematics connector

OPTIONAL

- AC power to platform
- Telematics
- Biodegradable hydraulic oil





LGMG's vertical mast lifts feature compact size and high maneuverability, providing excellent agility and convenience at constricted areas.

- With light weight and compact size, it can be used both indoor and outdoor.
- Self-leveling chain system ensures even stress, and each mast can rise and fall synchronously.
- Hinged double opening cover for easier maintenance.
- Standard with 0.5m extension deck and large working capacity.

SPECIFICATIONS

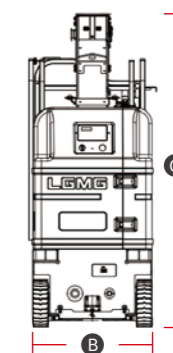
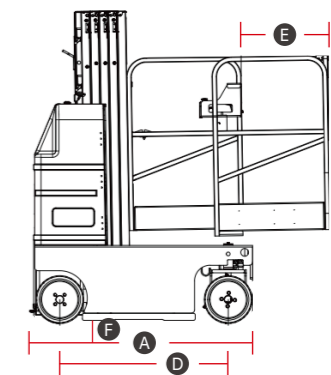
MODELS	M2030SE		M2530SE	
Measurements	Metric	Imperial	Metric	Imperial
Working Height Max.	8m/6.8m (in / out)	26'3"/22'4" (in / out)	9.5m/8m (in / out)	31'2"/26'3" (in / out)
Platform Height	6m/4.8m (in / out)	19'8"/15'9" (in / out)	7.5m/6m (in / out)	24'7"/19'8" (in / out)
Platform Size	0.79x0.75m	31"x30"	0.79x0.75m	31"x30"
A Overall Length	1.4m	4'7"	1.45m	4'9"
B Overall Width	0.76m	2'6"	0.795m	2'7"
C Overall Height (Stowed)	1.99m	6'6"	1.99m	6'6"
D Wheelbase	0.5m	1'8"	0.5m	1'8"
E Extension Deck	1.07m	3'6"	1.125m	3'8"
Ground Clearance (Stowed)	55mm	2"	55mm	2"
PRODUCTIVITY				
Max. Platform Occupancy	1(in) / 1(out)		1(in) / 1(out)	
Platform Capacity	160kg	352 lbs	160kg	352 lbs
Platform Capacity-Extension Deck	160kg	352 lbs	160kg	352 lbs
Drive Mode	Front-wheels Brake		Front-wheels Brake	
Drive speed (Stowed)	3km/h	1.9mph	3km/h	1.9mph
Drive speed (Raised)	0.8km/h	0.5mph	0.8km/h	0.5mph
Gradeability	25%		25%	
Tire size	305x100mm	12"x4"	305x100mm	12"x4"
POWER				
Power Source	24V,100Ah,AGM		24V,100Ah,AGM	
HYDRAULIC SYSTEM				
Hydraulic Oil Capacity	5L	1.3gal	5L	1.3gal
WEIGHT				
Machine Weight	1,170kg	2,579 lbs	1,510kg	3,329 lbs

STANDARD FEATURES

- Proportional controls
- Emergency stop device
- Horn/Hour meter
- Manual brake release
- Bottom oil tray
- Charging protection system
- Emergency descent
- Descent alarm with flashing beacon
- Pothole guard
- Front wheel brake
- Full-height drive
- Front wheel steering, front wheel drive
- Tilt alarm
- Telematics connector
- Maintenance-free battery
- Solid non-marking tires

OPTIONAL

- AC power to platform
- Telematics
- Platform tool box

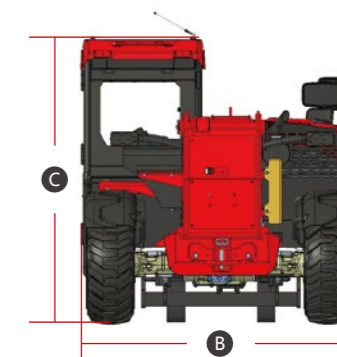
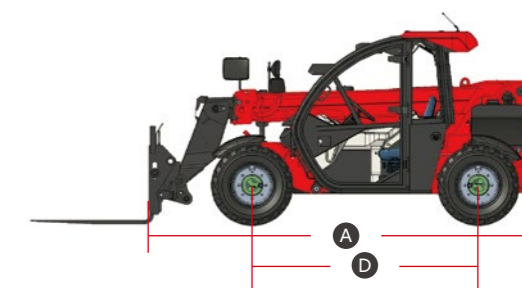


DIESEL POWERED

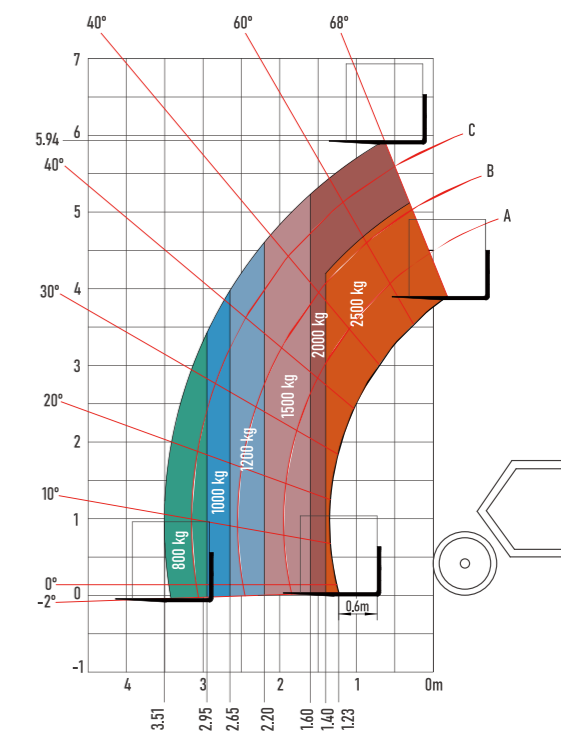


SPECIFICATIONS

MODELS	H5519	
Measurements	Metric	Imperial
Max. Lifting Height	5.94 m	19'6"
Max. Outreach	3.51 m	11'6"
Ⓐ Overall Length	3.99 m	13'1"
Ⓑ Overall Width	1.86 m	6'1"
Ⓒ Overall Height	1.97 m	6'6"
Ⓓ Wheelbase	2.3 m	7'7"
Ground Clearance	0.33 m	11"
PRODUCTIVITY		
Max. Capacity	2500 kg	5,512 lbs
Gradeability-Unladen	45%	
Min. Turning Radius	3.36 m	11'
Tilt Angle	±5°	
Drive / Steering Mode	4 Wheel Drive / 4 Wheel Steer	
Primary Boom Ascending Time	9±0.5 s	
Primary Boom Descending Time	6.5±0.5 s	
Boom Extending Time	6±0.5 s	
Boom Retracting Time	4±0.5 s	
Forward - First Gear Travel Speed	10±2 km/h	6.2±1.2 mph
Forward - Second Gear Travel Speed	24.9 km/h	15.5 mph
Backward - First Gear Travel Speed	10±2 km/h	6.2±1.2 mph
Backward - Second Gear Travel Speed	24.9 km/h	15.5 mph
Braking	Multi-disc wet brake	
Standard Tyres	12-16.5-12-TL	
ENGINE		
Manufacturer	Kubota	
Rated Power	54.6 kW	73.2 hp
Max. Torque	289.3 N.m	213.4 lb.ft
Displacement	3,331 ml	203.3 cu.in
Fuel Tank Capacity	63 L	16.6 gal
HYDRAULIC SYSTEM		
Working pump displacement	35 ml/r	
Hydraulic Oil Capacity	75 L	19.8 gal
WEIGHT		
Machine Weight	5,050 kg	11,133 lbs



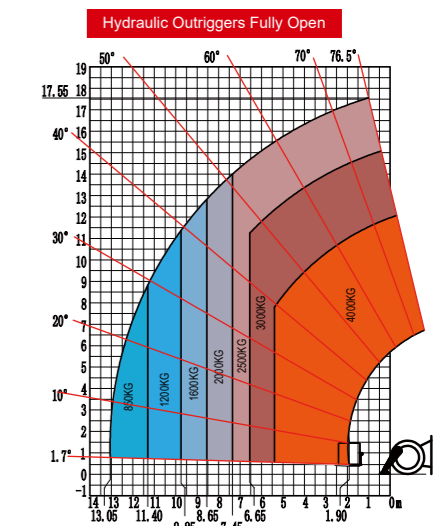
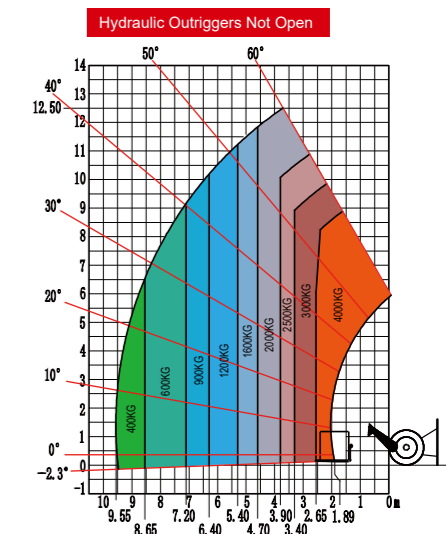
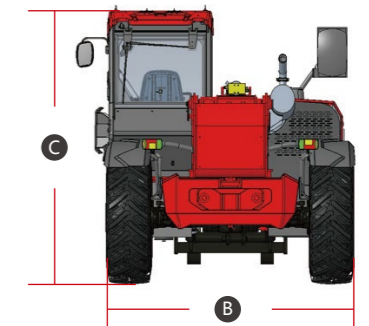
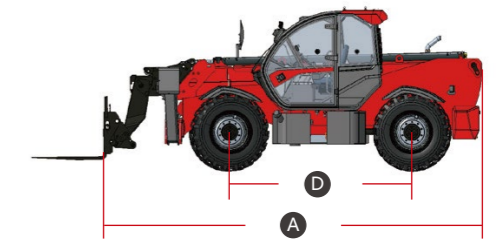
LOAD CHARTS



DIESEL POWERED

SPECIFICATIONS

MODELS	H1840	
Measurements	Metric	Imperial
Max. Lifting Height	17.6m	57'9"
Max. Outreach	13.1m	43'
Ⓐ Overall Length	5.9m	19'4"
Ⓑ Overall Width	2.44m	8'
Ⓒ Overall Height	2.67m	8'9"
Ⓓ Wheelbase	3.07m	10'1"
Ground Clearance	0.41m	1'4"
PRODUCTIVITY		
Max. Capacity	4,000kg	8,818 lbs
Gradeability-Unladen	65%	
Min. Turning Radius	4.3m	14'1"
Tilt Angle	±9°	
Drive /Steering Mode	4 Wheel Drive / 4 Wheel Steer	
Primary Boom Ascending Time	14s	
Primary Boom Descending Time	16s	
Boom Extending Time	22s	
Boom Retracting Time	15s	
Forward - First Gear Travel Speed	5km/h	3.1mph
Forward - Second Gear Travel Speed	12km/h	7.5mph
Forward - Third Gear Travel Speed	20km/h	12.4mph
Forward - Fourth Gear Travel Speed	30km/h	18.6mph
Backward - First Gear Travel Speed	5km/h	3.1mph
Backward - Second Gear Travel Speed	12km/h	7.5mph
Backward - Third Gear Travel Speed	20km/h	12.4mph
Braking	Multi-disc wet brake of front axle	
Standard Tyres	440/80 R24	
POWER		
Manufacturer	Perkins	
Rated Power	74.5kW	99.9hp
Max. Torque	420N.m	310 lb.ft
Displacement	4,400ml	269 cu.in
Maximum traction force	93kN	
HYDRAULIC SYSTEM		
Working pump type	Variable piston pump	
Working pump displacement	139 l/min	37 US gpm
TANK CAPACITIES		
Hydraulic Oil Capacity	180L	47.6gal
Fuel Tank Capacity	150L	39.6gal
WEIGHT		
Machine Weight	12,350kg	27,227 lbs

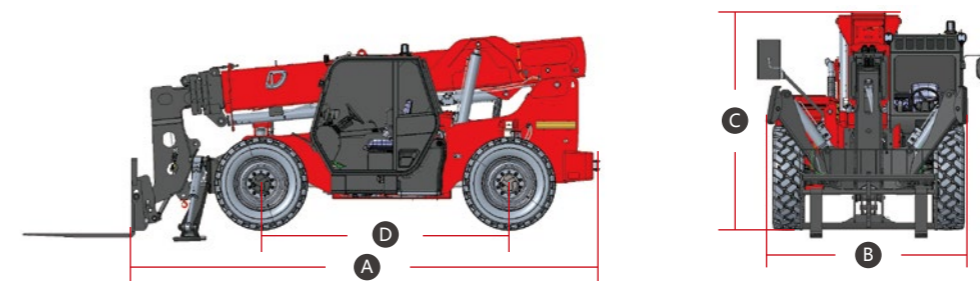


DIESEL POWERED

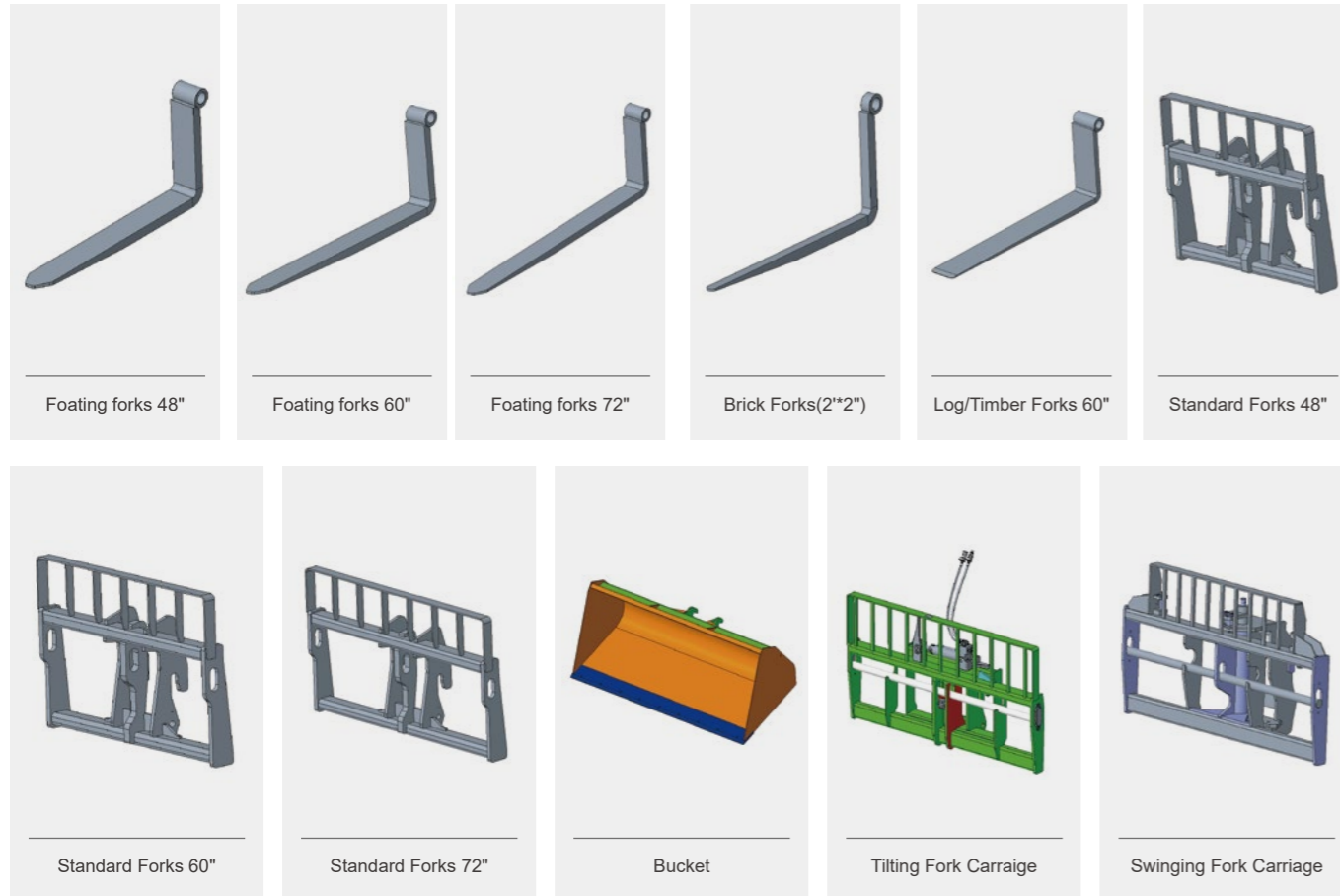


SPECIFICATIONS

MODELS	H1056		H1256	
Measurements	Imperial	Metric	Imperial	Metric
Max. Lifting Height	56'1"	17.1 m	56'1"	17.1 m
Max. Outreach	42'	12.8 m	42'	12.8 m
Ⓑ Overall Length	21'7"	6.57 m	21'7"	6.57 m
Ⓒ Overall Width	7'11"	2.41 m	7'11"	2.41 m
Ⓓ Overall Height	8'10"	2.7 m	8'10"	2.7 m
Ⓔ Wheelbase	11'6"	3.5 m	11'6"	3.5 m
Ground Clearance	1'5"	0.42 m	1'4"	0.4 m
PRODUCTIVITY				
Max. Capacity	10,000 lbs	4,535 kg	12,000 lbs	5,443 kg
Gradeability-Unladen	50%		50%	
Min. Turning Radius	< 14'1"	< 4.3 m	< 14'1"	< 4.3 m
Tilt Angle	±10°		±10°	
Drive / Steering Mode	4 Wheel Drive / 4 Wheel Steer		4 Wheel Drive / 4 Wheel Steer	
Primary Boom Ascending Time	15-25 s		15-25 s	
Primary Boom Descending Time	10-20 s		10-20 s	
Boom Extending Time	20-30 s		20-30 s	
Boom Retracting Time	15-25 s		15-25 s	
Forward - First Gear Travel Speed	3.1 mph	5 km/h	3.1 mph	5 km/h
Forward - Second Gear Travel Speed	5.6 mph	9 km/h	5.6 mph	9 km/h
Forward - Third Gear Travel Speed	9.9 mph	16 km/h	11.8 mph	19 km/h
Forward - Fourth Gear Travel Speed	15.5 mph	25 km/h	15.5 mph	25 km/h
Backward - First Gear Travel Speed	3.1 mph	5 km/h	3.1 mph	5 km/h
Backward - Second Gear Travel Speed	5.6 mph	9 km/h	5.6 mph	9 km/h
Backward - Third Gear Travel Speed	9.9 mph	16 km/h	11.8 mph	19 km/h
Braking	Multi-disc wet brake		Multi-disc wet brake	
Tire Type	Foam-filled tires		Foam-filled tires	
Tire Models	400/75-28		400/75-28	
ENGINE				
Manufacturer	Cummins		Cummins	
Rated Power	120.7hp / 73.8hp	90kW / 55 kW	120.7 hp	90 kW
Max. Torque	295 lb.ft	400 N.m	368.8 lb.ft	500 N.m
Displacement	231.9 cu.in	3,800 ml	231.9 cu.in	3,800 ml
Fuel Tank Capacity	38.3 gal	145 L	38.3 gal	145 L
HYDRAULIC SYSTEM				
Working pump displacement	63 ml/r		63 ml/r	
Hydraulic Oil Capacity	37.5 gal	142 L	37.5 gal	142 L
WEIGHT				
Machine Weight	33,730 lbs	15,300 kg	34,833 lbs	15,800 kg

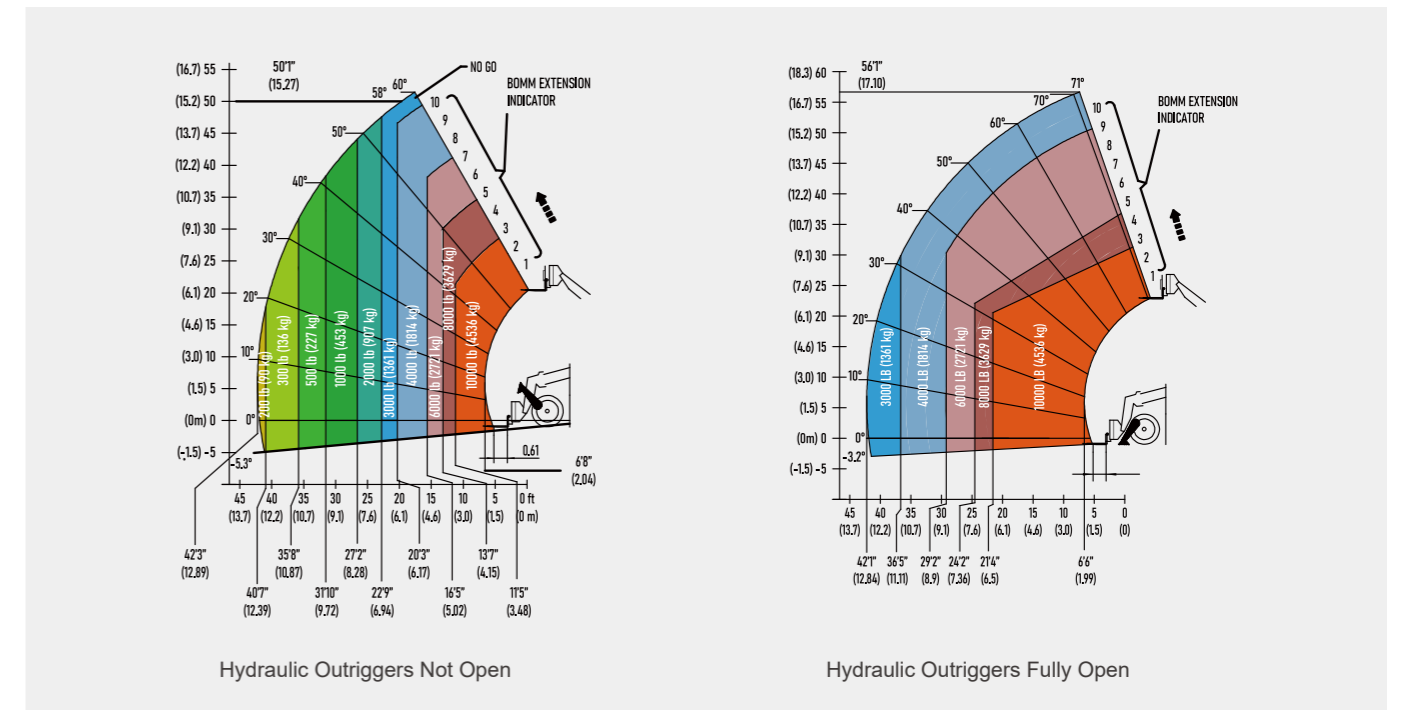


PRODUCT RANGE OF ATTACHMENTS



LOAD CHARTS

H1056



H1256

